

# Multiple change-point detection for high-dimensional time series via Sparsified Binary Segmentation

Haeran Cho <sup>\*</sup> and Piotr Fryzlewicz <sup>†</sup>

April 1, 2014

## Abstract

Time series segmentation, a.k.a. multiple change-point detection, is a well-established problem. However, few solutions are designed specifically for high-dimensional situations. In this paper, our interest is in segmenting the second-order structure of a high-dimensional time series. In a generic step of a binary segmentation algorithm for multivariate time series, one natural solution is to combine CUSUM statistics obtained from local periodograms and cross-periodograms of the components of the input time series. However, the standard “maximum” and “average” methods for doing so often fail in high dimensions when, for example, the change-points are sparse across the panel or the CUSUM statistics are spuriously large.

In this paper, we propose the Sparsified Binary Segmentation (SBS) algorithm which aggregates the CUSUM statistics by adding only those that pass a certain threshold. This “sparsifying” step reduces the impact of irrelevant, noisy contributions, which is particularly beneficial in high dimensions.

In order to show the consistency of SBS, we introduce the multivariate Locally Stationary Wavelet model for time series, which is a separate contribution of this work.

## 1 Introduction

Detecting multiple change-points in univariate time series has been widely discussed in various contexts, see Inclán and Tiao (1994), Chen and Gupta (1997), Lavielle and Moulines (2000), Ombao et al. (2001), Davis et al. (2006) and Davis et al. (2008) for some recent approaches. In this article, we use the term “multiple change-point detection” interchangeably with “segmentation”. By contrast, segmentation of the second-order structure of multivariate time series, especially those of high dimensionality, is yet to receive much attention despite the fact that multivariate time series observed in practical problems often appear second-order nonstationary. For example, in financial time series, large panels of asset returns routinely display such nonstationarities (see e.g. Fan et al. (2011) for a comprehensive review of challenges of high-dimensionality in finance and economics). Another example can be found in neuroscience, where electroencephalograms (EEG) recorded at multiple channels exhibit nonstationarity and high correlations as well as being massive in volume

---

<sup>\*</sup>School of Mathematics, University of Bristol.

<sup>†</sup>Department of Statistics, London School of Economics.

(Ombao et al. 2005). Vert and Bleakley (2010) describe other interesting examples of multivariate, nonstationary time series in many other fields, such as signal processing, biology and medicine.

As arguably one of the simplest forms of departure from stationarity, we consider a class of piecewise stationary, multivariate (possibly high-dimensional) time series with a time-varying second-order structure, where the autocovariance and cross-covariance functions are asymptotically piecewise constant and hence the time series is approximately stationary between change-points in these functions.

We first list some existing approaches to the problem of multiple change-point detection in multivariate (not necessarily high-dimensional) time series. Ombao et al. (2005) employed the SLEX (smooth localized complex exponentials) basis for time series segmentation, originally proposed by Ombao et al. (2002). The choice of SLEX basis leads to the segmentation of the time series, achieved via complexity-penalized optimization. Lavielle and Teyssière (2006) introduced a procedure based on penalized Gaussian log-likelihood as a cost function, where the estimator was computed via dynamic programming. The performance of the method was tested on bivariate examples. Vert and Bleakley (2010) proposed a method for approximating multiple signals, with independent noise, via piecewise constant functions, where the change-point detection problem was re-formulated as a penalized regression problem and solved by the group Lasso (Yuan and Lin 2006). Note that in Cho and Fryzlewicz (2011), we argued that the  $l_1$ -penalty was sub-optimal for change-point detection. CUSUM-type statistics have been widely used in time series segmentation. In the context of multivariate time series segmentation, Groen et al. (2011) studied the average and the maximum of  $d$  CUSUM statistics, each obtained from one component of a  $d$ -dimensional time series, and compared their theoretical properties as well as finite sample performance. The average test statistic was also adopted in Horváth and Hušková (2012) for detecting a single change in the mean of a panel data model, and both papers allowed the dimensionality to increase under the constraint  $d^2/T \rightarrow 0$ , where  $T$  denoted the sample size. In Aue et al. (2009), a CUSUM statistic was proposed for detecting and locating a single change-point in the covariance structure of multivariate time series, where its extension to the detection of multiple change-points via binary segmentation was discussed heuristically.

In this paper, we propose a CUSUM-based binary segmentation algorithm, termed “Sparsified Binary Segmentation” (SBS), for identifying multiple change-points in the second-order structure of a multivariate (possibly high-dimensional) time series. The input to the SBS algorithm is  $\{Y_{t,T}^{(k)}, k = 1, \dots, d\}$ , a  $d$ -dimensional sequence of localized periodograms and cross-periodograms computed on the original multivariate time series, where the dimensionality  $d$  is allowed to diverge with the number of observations  $T$  at a certain rate.

A key ingredient of the SBS algorithm is a “sparsifying” step, where, instead of blindly aggregating all the information about the change-points from the  $d$  sequences  $Y_{t,T}^{(k)}$ , we apply a threshold to the individual CUSUM statistics computed on each  $Y_{t,T}^{(k)}$ , and only those temporal fragments of the CUSUMs that survive after the thresholding are aggregated to have any contribution in detecting and locating the change-points. In this manner, we reduce the impact of those sequences that do

not contain any change-points so that the procedure is less affected by them, which can be particularly beneficial in a high-dimensional context. Therefore, we can expect improved performance in comparison to methods without a similar dimension-reduction step, and this point is explained in more detail in Section 2.1. Further, due to the aggregation of the CUSUM statistics, the algorithm automatically identifies common change-points, rather than estimating single change-points at different locations in different components of the time series, which removes the need for post-processing across the  $d$ -dimensional sequence. This latter characteristic is particularly attractive in a high-dimensional situation.

As well as formulating the complete SBS algorithm, we show its consistency for the number and the locations of the change-points. One theoretical contribution of this work is that our rates of convergence of the location estimators improve on those previously obtained for binary segmentation for univariate time series (Cho and Fryzlewicz 2012) and are near-optimal in the case of the change-points being separated by time intervals of length  $\asymp T$ , where  $a_T \asymp b_T$  if  $a_T^{-1}b_T \rightarrow C$  as  $T \rightarrow \infty$  for some constant  $C$ . This was achieved by adapting, to the high-dimensional time series context, the proof techniques from Fryzlewicz (2013) for the univariate signal plus i.i.d. Gaussian noise model. As a theoretical setting for deriving the consistency results, we introduce the multivariate Locally Stationary Wavelet (LSW) model for time series. This, we believe, is a separate contribution of the current work, and provides a multivariate extension of the univariate LSW model of Nason et al. (2000) and of the bivariate LSW model of Sanderson et al. (2010).

The rest of the paper is organized as follows. In Section 2, we introduce the SBS algorithm for segmenting a possibly large number of multiplicative sequences. In Section 3, we introduce a class of piecewise stationary, multivariate time series and discuss the specifics of applying the SBS from Section 2 to detect change-points in its second-order structure (the version of SBS specifically applicable to multivariate time series is labeled SBS-MVTS in the paper). Section 4 illustrates the performance of the proposed methodology on a set of simulated examples, and Section 5 applies it to the multivariate series of S&P 500 components, observed daily between 2007 and 2011. The proofs are in the Appendix.

## 2 The SBS algorithm in a generic setting

In this section, we outline the SBS algorithm for change-point detection in a panel of multiplicative sequences, which may share common change-points in their expectations. We later consider a piecewise stationary, multivariate time series model and use it to derive a set of statistics, which contain information about the change-points in its second-order structure. Those statistics are shown to follow the multiplicative model considered so that SBS can be applied to them. This will enable us to segment the original time series using the SBS methodology.

The multiplicative model in question is

$$Y_{t,T}^{(k)} = \sigma^{(k)}(t/T) \cdot Z_{t,T}^{(k)2}, \quad t = 0, \dots, T-1; \quad k = 1, \dots, d, \quad (1)$$

where  $Z_{t,T}^{(k)}$  is a sequence of (possibly) autocorrelated and nonstationary standard normal variables such that  $\mathbb{E}Y_{t,T}^{(k)} = \sigma^{(k)}(t/T)$ , which implies that each  $Y_{t,T}^{(k)}$  is a scaled  $\chi_1^2$  variable. Extensions to some other distributions are possible but technically involved and we do not pursue them here. Each  $\sigma^{(k)}(t/T)$  is a piecewise constant function, and we aim to detect any change-points in  $\sigma^{(k)}(t/T)$  for  $k = 1, \dots, d$ . It is assumed that there are  $N$  change-points  $0 < \eta_1 < \eta_2 < \dots < \eta_N < T - 1$  possibly shared by the  $d$  functions  $\sigma^{(k)}(t/T)$ , in the sense that for each  $\eta_q$ , there exists one or more  $\sigma^{(k)}(t/T)$  satisfying  $\sigma^{(k)}(\eta_q/T) \neq \sigma^{(k)}((\eta_q + 1)/T)$ . We impose the following conditions on  $\eta_q$ ,  $q = 1, \dots, N$ .

- (A1) (i) The distance between any two adjacent change-points is bounded from below by  $\delta_T \asymp T^\Theta$  for  $\Theta \in (3/4, 1]$ .
- (ii) The spacings between any three consecutive change-points are not too “unbalanced” in the sense that they satisfy

$$\max \left( \frac{\eta_q - \eta_{q-1} + 1}{\eta_{q+1} - \eta_{q-1} + 1}, \frac{\eta_{q+1} - \eta_q}{\eta_{q+1} - \eta_{q-1} + 1} \right) \leq c_*, \quad (2)$$

where  $c_*$  is a constant satisfying  $c_* \in [1/2, 1)$ .

Note that (A1.i) determines the upper bound on the total number of change-points, which is allowed to diverge with  $T$  as long as  $\Theta < 1$ , and is unknown by the user. Cho and Fryzlewicz (2012) proposed a change-point detection method for a *single* sequence  $Y_{t,T}$  following model (1). The main ingredient of the method proposed in that work was a binary segmentation algorithm which simultaneously located and tested for change-points in a recursive manner. Below we provide a sketch of that algorithm, which is referred to as Univariate Binary Segmentation (UBS) throughout the present paper.

Firstly, the likely position of a change-point in the interval  $[0, T - 1]$  is located as the point where the following CUSUM-type statistic is maximized over  $t$ ;

$$\mathcal{Y}_{0,t,T-1} = \mathcal{Y}_{0,t,T-1}(Y_{u,T}) = \left( \frac{1}{T} \sum_{u=0}^{T-1} Y_{u,T} \right)^{-1} \cdot \left| \sqrt{\frac{T-t}{T \cdot t}} \sum_{u=0}^{t-1} Y_{u,T} - \sqrt{\frac{t}{T \cdot (T-t)}} \sum_{u=t}^{T-1} Y_{u,T} \right|. \quad (3)$$

A discussion of the properties of  $\mathcal{Y}_{0,t,T-1}$  can be found in Cho and Fryzlewicz (2012); we only remark here that the first term of the product in (3) is a normalizing term essential in multiplicative settings, which makes our results independent of the level of  $\sigma^{(k)}(t/T)$  in (1). Next, for  $b = \arg \max_t \mathcal{Y}_{0,t,T-1}$ , if  $\mathcal{Y}_{0,b,T-1} < \pi_T$  with a suitably chosen threshold  $\pi_T$ , then we stop; otherwise we add  $b$  to the set of estimated change-points and continue recursively in the same manner to the left and to the right of  $b$ . Details of the UBS algorithm and the theoretical result on its consistency for the number and the locations of the change-points can be found in the above work.

## 2.1 Binary segmentation for high-dimensional data

In this section, we extend the UBS algorithm to one which is applicable to a panel of multiplicative sequences (1) even if its dimensionality  $d$  diverges as  $T \rightarrow \infty$ . The resulting SBS algorithm contains

a crucial “sparsifying” step as detailed below.

We firstly note that in the multivariate case  $d > 1$ , we could proceed by applying the UBS algorithm to each sequence  $Y_{t,T}^{(k)}$  separately, and then pruning the estimated change-points by identifying those corresponding to each true change-point. However, it is conceivable that such pruning may not be straightforward, particularly in high dimensions. We propose to circumvent this difficulty by segmenting the  $d$  sequences  $Y_{t,T}^{(k)}$  at the same time by examining the CUSUM statistics  $\mathcal{Y}_{0,t,T-1}(Y_{u,T}^{(k)}) \equiv \mathcal{Y}_{0,t,T-1}^{(k)}$  in (3) simultaneously over  $k$ , rather than separately for each  $k$ .

A number of ways of aggregating information from multiple CUSUM statistics have been proposed in the literature. Groen et al. (2011) discussed two popular methods: the point-wise average, and the point-wise maximum. Specifically, using our notation, they are respectively defined as

$$\tilde{y}_t^{\text{avg}} = \frac{1}{d} \sum_{k=1}^d \mathcal{Y}_{0,t,T-1}^{(k)}, \quad \tilde{y}_t^{\text{max}} = \max_{1 \leq k \leq d} \mathcal{Y}_{0,t,T-1}^{(k)}. \quad (4)$$

To determine whether  $b = \arg \max_t \tilde{y}_t^{\text{avg}}$  ( $\tilde{y}_t^{\text{max}}$ ) is regarded as an estimated change-point,  $\tilde{y}_b^{\text{avg}}$  ( $\tilde{y}_b^{\text{max}}$ ) needs to be compared against a threshold which takes into account the aggregation step.

In the SBS algorithm, we propose another way of simultaneously considering multiple CUSUM statistics, which integrates a thresholding step that enables us to bypass some difficulties in dealing with high-dimensional data which we describe later on. For each  $k$ , the CUSUM statistic  $\mathcal{Y}_{0,t,T-1}^{(k)}$  is compared with a threshold, say  $\pi_T$  (to be specified later in Section 3), and only the contributions from the time intervals where  $\mathcal{Y}_{0,t,T-1}^{(k)} > \pi_T$  are taken into account in detecting and locating a change-point. Thus  $\tilde{y}_t^{\text{thr}}$ , the main statistic of interest in the SBS algorithm, is defined as

$$\tilde{y}_t^{\text{thr}} = \sum_{k=1}^d \mathcal{Y}_{0,t,T-1}^{(k)} \cdot \mathbb{I} \left( \mathcal{Y}_{0,t,T-1}^{(k)} > \pi_T \right), \quad (5)$$

where  $\mathbb{I}(\cdot)$  is an indicator function returning  $\mathbb{I}(\mathcal{A}) = 1$  if the event  $\mathcal{A}$  is true and  $\mathbb{I}(\mathcal{A}) = 0$  otherwise. In this manner,  $\tilde{y}_t^{\text{thr}}$  is non-zero only when at least one of  $\mathcal{Y}_{0,t,T-1}^{(k)}$  is greater than the threshold, i.e. a change-point is detected in  $Y_{t,T}^{(k)}$  for such  $k$ . Therefore we can conclude that a change-point is detected in the  $d$ -dimensional multiplicative sequences and, without applying any pruning, its location is estimated as  $b = \arg \max_t \tilde{y}_t^{\text{thr}}$ .

While the empirical study conducted in Groen et al. (2011) shows the effectiveness of both  $\tilde{y}_t^{\text{avg}}$  and  $\tilde{y}_t^{\text{max}}$  in detecting the presence of a single change-point, there exist high-dimensional scenarios where these two estimators fail. Below we provide examples of high-dimensional situations where  $\tilde{y}_t^{\text{thr}}$  exhibits better performance than the other two.

### (A) Sparse change-points.

We first independently generate two time series  $X_t^{(k)}, k = 1, 2$  as

$$\begin{aligned} X_{t,T}^{(1)} &= aX_{t-1,T}^{(1)} + \epsilon_{t,T}^{(1)} \\ X_{t,T}^{(2)} &= \begin{cases} 0.95X_{t-1,T}^{(2)} + \epsilon_{t,T}^{(2)} & \text{for } 1 \leq t \leq \lfloor T/2 \rfloor, \\ 0.3X_{t-1,T}^{(2)} + \epsilon_{t,T}^{(2)} & \text{for } \lfloor T/2 \rfloor + 1 \leq t \leq T, \end{cases} \end{aligned}$$

with  $T = 1024$ . The parameter  $a$  is randomly generated from a uniform distribution  $\mathcal{U}(0.5, 0.99)$  and  $\epsilon_{t,T}^{(k)}$  are i.i.d. standard normal variables for  $k = 1, 2$ . We further produce the sequences  $Y_{t,T}^{(1)}$  and  $Y_{t,T}^{(2)}$  as  $Y_{t,T}^{(k)} = 2^{-1}(X_{t,T}^{(k)} - X_{t-1,T}^{(k)})^2$ ,  $k = 1, 2$ , such that  $Y_{t,T}^{(1)}$  does not have any change in  $\mathbb{E}Y_{t,T}^{(1)}$ , while  $\mathbb{E}Y_{t,T}^{(2)}$  has one change-point at  $t = \lfloor T/2 \rfloor$ . The rationale behind the choice of  $Y_{t,T}^{(k)}$  as well as its relationship to the multiplicative model (1) are discussed in detail in Section 3. As can be seen from the top panel of Figure 1, all three of the corresponding statistics  $\tilde{y}_t^{\text{avg}}$ ,  $\tilde{y}_t^{\text{max}}$  and  $\tilde{y}_t^{\text{thr}}$  are able to correctly identify the location of the true change-point.

Now, consider the case with  $d = 100$  time series where the additional time series  $X_{t,T}^{(k)}$ ,  $k = 3, \dots, d$  are independently generated as  $X_{t,T}^{(1)}$  such that, overall, there is only one change-point coming from  $X_{t,T}^{(2)}$  in the entire panel. Then, in obtaining the point-wise average of the  $d$  CUSUM statistics in  $\tilde{y}_t^{\text{avg}}$ , the  $\mathcal{Y}_{0,t,T-1}^{(k)}$  for  $k \neq 2$  corrupt the peak that is achieved around  $t = \lfloor T/2 \rfloor$  for  $\mathcal{Y}_{0,t,T-1}^{(2)}$ , and hence the maximum of  $\tilde{y}_t^{\text{avg}}$  is attained far from the true change-point. On the other hand, both  $\tilde{y}_t^{\text{thr}}$  and  $\tilde{y}_t^{\text{max}}$  are successful in maintaining the peak achieved by  $\mathcal{Y}_{0,t,T-1}^{(2)}$  by disregarding most or all of the  $\mathcal{Y}_{0,t,T-1}^{(k)}$ ,  $k \neq 2$ .

### (B) Spuriously large CUSUM statistics.

Again, we first independently generate  $d = 2$  time series  $X_{t,T}^{(k)}, k = 1, 2$ , with  $T = 1024$ , where  $X_{t,T}^{(1)}$  is identical to that in (A), and

$$X_{t,T}^{(2)} = \begin{cases} 0.3X_{t-1,T}^{(2)} + \epsilon_{t,T}^{(2)} & \text{for } 1 \leq t \leq 100, \\ -0.75X_{t-1,T}^{(2)} + \epsilon_{t,T}^{(2)} & \text{for } 101 \leq t \leq T. \end{cases}$$

$X_{t,T}^{(2)}$  is composed of two stationary segments, where the first segment is relatively short and (weekly) positively autocorrelated, and the second one is long and negatively autocorrelated. The negative autocorrelation in  $X_{t,T}^{(2)}$  for  $t \geq 101$  leads to  $Y_{t,T}^{(2)}$  being highly autocorrelated, which in turn results in spuriously large values of  $\mathcal{Y}_{0,t,T-1}^{(2)}$  for  $t \geq 101$  even when  $t$  is far from the true change-point. However, when  $d = 2$ , all three statistics  $\tilde{y}_t^{\text{thr}}$ ,  $\tilde{y}_t^{\text{max}}$  and  $\tilde{y}_t^{\text{avg}}$  still manage to locate the true change-point around  $t = 100$ , which is illustrated in the top panel of Figure 2.

Now, let  $d = 100$  and independently generate 50 time series distributed as  $X_{t,T}^{(1)}$  and 50 as  $X_{t,T}^{(2)}$  such that the change-point is not sparse across the panel. Since there are  $d/2 = 50$  sequences  $Y_{t,T}^{(k)}$  for which the CUSUM statistics  $\mathcal{Y}_{0,t,T-1}^{(k)}$  can take spuriously large values anywhere over

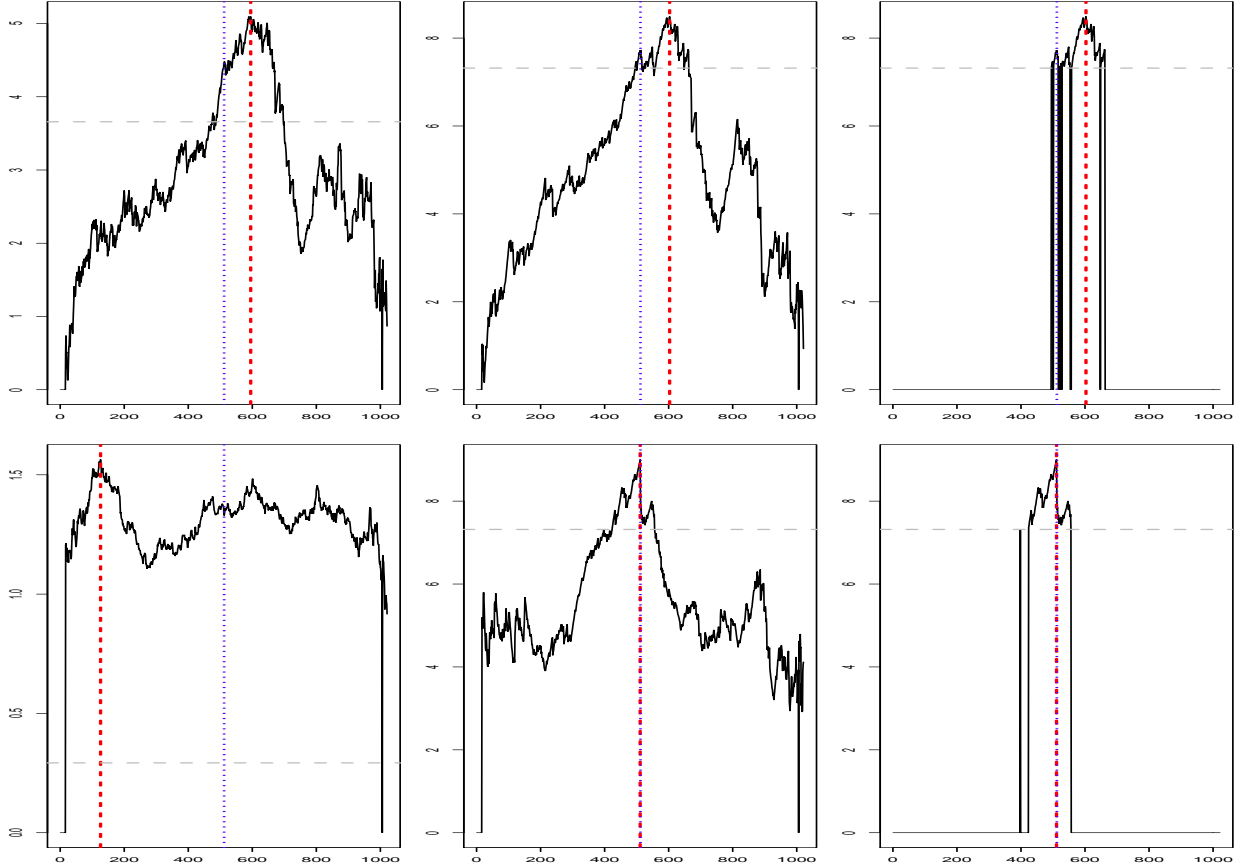


Figure 1: Top:  $\tilde{y}_t^{\text{avg}}$  (left),  $\tilde{y}_t^{\text{max}}$  (center), and  $\tilde{y}_t^{\text{thr}}$  (right) from model (A) in Section 2.1 when  $d = 2$ ; bottom:  $d = 100$ ; the broken vertical lines: location of the maximum of each of these sequences; the dotted vertical lines: location of the true change-point; the broken horizontal lines: the threshold  $\pi_T$ .

$t \in [101, T]$ , the statistic  $\tilde{y}_t^{\text{max}}$  becomes corrupted and is no longer able to identify the true change-point.

On the other hand,  $\tilde{y}_t^{\text{thr}}$  not only disregards the contribution from the segments containing no change-points, but also aggregates the contribution from those containing the change-point, and therefore is able to identify the change-point very clearly. In this example, the aggregation effect also causes  $\tilde{y}_t^{\text{avg}}$  to work well.

To summarize,  $\tilde{y}_t^{\text{thr}}$  is shown to be better at dealing with some difficulties arising from the high-dimensionality of the data than either  $\tilde{y}_t^{\text{avg}}$  or  $\tilde{y}_t^{\text{max}}$  in these two examples. In addition, the superior performance of  $\tilde{y}_t^{\text{thr}}$  is attributed to different features of the sparsifying step in the two cases. Motivated by the above discussion, we now introduce our SBS algorithm for segmenting  $d$ -dimensional series below. We use  $j$  to denote the level index (indicating the progression of the segmentation procedure) and  $l$  to denote the location index of the node at each level.

### SBS algorithm

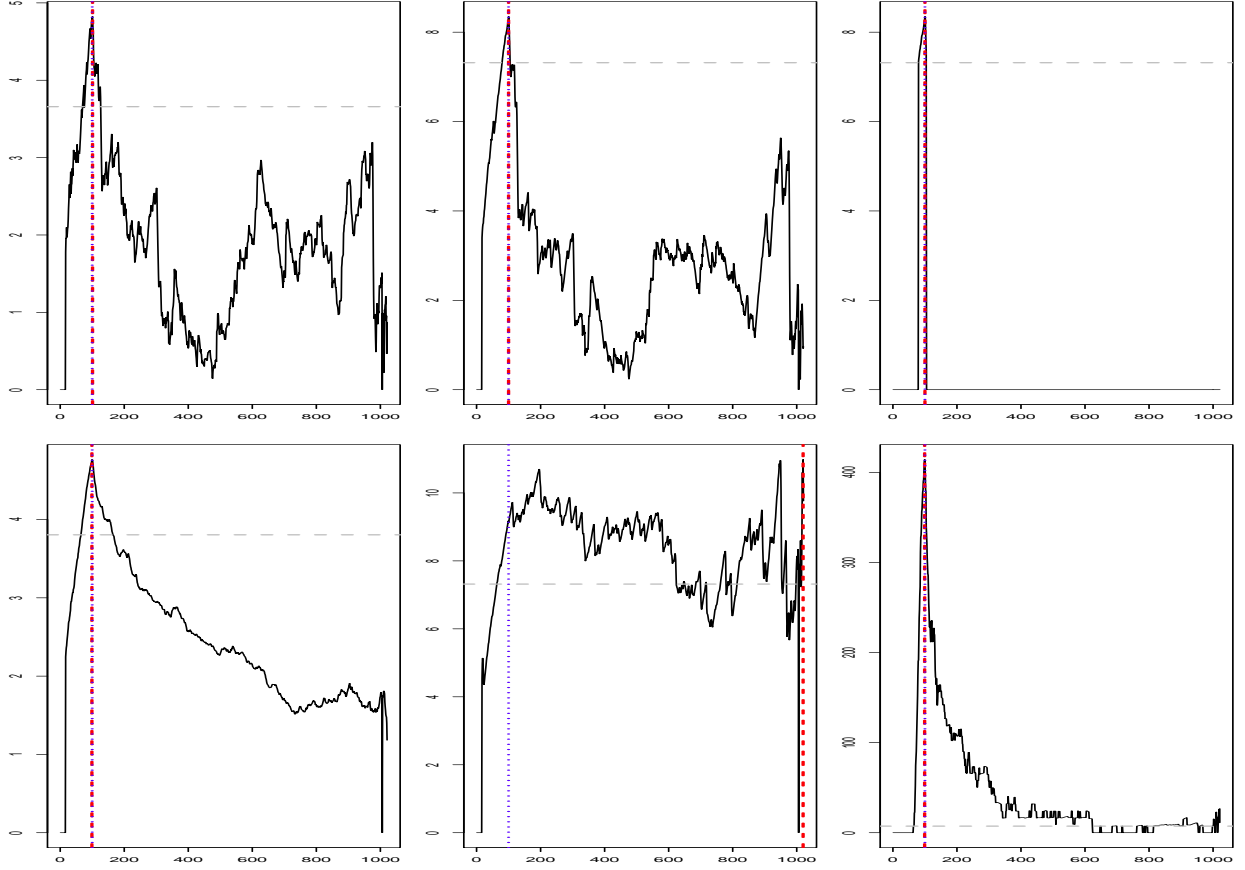


Figure 2: Top:  $\tilde{y}_t^{\text{avg}}$  (left),  $\tilde{y}_t^{\text{max}}$  (center), and  $\tilde{y}_t^{\text{thr}}$  (right) from (B) in Section 2.1 when  $d = 2$ ; bottom:  $d = 100$ ; the broken vertical lines: location of the maximum of each of these sequences; the dotted vertical lines: location of the true change-point; the broken horizontal lines: the threshold  $\pi_T$ .

**Step 0** Start with  $(j, l) = (1, 1)$ , setting  $s_{1,1} = 0$ ,  $e_{1,1} = T - 1$  and  $n_{1,1} = e_{1,1} - s_{1,1} + 1$ .

**Step 1** Compute the CUSUM statistics  $\mathcal{Y}_{s_{j,l}, t, e_{j,l}}^{(k)}$  as in (3) for all  $k = 1, \dots, d$  over  $t \in (s_{j,l}, e_{j,l})$ , and obtain  $\tilde{y}_t^{\text{thr}}$  as

$$\tilde{y}_t^{\text{thr}} = \sum_{k=1}^d \mathcal{Y}_{s_{j,l}, t, e_{j,l}}^{(k)} \cdot \mathbb{I} \left( \mathcal{Y}_{s_{j,l}, t, e_{j,l}}^{(k)} > \pi_T \right),$$

with a threshold  $\pi_T$ .

**Step 2**

**Step 2.1** If  $\tilde{y}_t^{\text{thr}} = 0$  for all  $t \in (s_{j,l}, e_{j,l})$ , stop the algorithm for the interval  $[s_{j,l}, e_{j,l}]$ .

**Step 2.2** If not, find  $t$  that maximizes the corresponding  $\tilde{y}_t^{\text{thr}}$  while satisfying

$$\max \left( \frac{t - s_{j,l} + 1}{n_{j,l}}, \frac{e_{j,l} - t}{n_{j,l}} \right) \leq c_*, \quad (6)$$



where  $c_*$  is identical to the one in (A1).

**Step 2.3** If there exists any  $u \in [t - \Delta_T, t + \Delta_T]$  for which  $\tilde{y}_u^{\text{thr}} = 0$ , go back to Step 2.2 and find  $t$  attaining the next largest  $\tilde{y}_t^{\text{thr}}$  while satisfying (6). Repeat the above until a  $t$  is found that satisfies  $\tilde{y}_u^{\text{thr}} > 0$  for all  $u \in [t - \Delta_T, t + \Delta_T]$ , set such  $t$  as  $b_{j,l}$  and proceed to Step 3. If such  $t$  does not exist, stop the algorithm for the interval  $[s_{j,l}, e_{j,l}]$ .

**Step 3** Set  $b_{j,l}$  as an estimated change-point and divide the interval  $[s_{j,l}, e_{j,l}]$  into two subintervals  $(s_{j+1,2l-1}, e_{j+1,2l-1}) \leftarrow (s_{j,l}, b_{j,l})$  and  $(s_{j+1,2l}, e_{j+1,2l}) \leftarrow (b_{j,l} + 1, e_{j,l})$ . Update the level  $j$  as  $j \leftarrow j + 1$  and go to Step 1.

Condition (6) is imposed to prevent the algorithm from detecting a change-point that is too close to previously detected ones; note that in (A1), a similar condition is imposed on the locations of the true change-points.

As seen in Section 2.1 with two motivating examples, the performance of a change-point detection method for high-dimensional time series depends on many factors besides the underlying dimension, and we cannot set  $\pi_T$  to uniformly increase or decrease with  $d$ . Instead, to handle the false alarms in multiple testing procedure, the threshold  $\pi_T$  is derived such that on any segment  $[s, e]$  containing previously undetected true change-points for at least one  $k = 1, \dots, d$ , the test statistic  $\max_{t \in (s, e)} \mathcal{Y}_{s, t, e}^{(k)}$  exceeds  $\pi_T$  with probability converging to one for all such  $k$ , while  $\mathcal{Y}_{s, t, e}^{(k)} < \pi_T$  for the remaining  $k$ 's, as long as  $d$  satisfies (A4).

Also, as the CUSUM statistic  $\mathcal{Y}_{s_{j,l}, t, e_{j,l}}^{(k)}$  is expected to increase and then decrease smoothly around true change-points without discontinuities, Step 2.3 ensures that the algorithm disregards any spurious spikes in  $\mathcal{Y}_{s_{j,l}, t, e_{j,l}}^{(k)}$ . Section 3.3 provides a detailed discussion on the practical selection of the parameters of SBS, including  $\pi_T$  and  $\Delta_T$ . Steps 2.1 and 2.3 provide a stopping rule for the algorithm on those intervals  $[s_{j,l}, e_{j,l}]$  where either no CUSUM statistic  $\mathcal{Y}_{s_{j,l}, t, e_{j,l}}^{(k)}$  exceeds  $\pi_T$  (Step 2.1), or the exceedance is judged to be spurious (Step 2.3).

As an aside, we note that the mechanics of the SBS algorithm can be applicable in more general situations too, beyond the particular model (1).

## 2.2 Consistency of the SBS algorithm

In order to show the consistency of the change-points detected by the SBS algorithm in terms of their total number and locations, we impose the following assumptions in addition to (A1).

(A2)  $\{Z_{t,T}^{(k)}\}_{t=0}^{T-1}$  is a sequence of standard normal variables and  $\max_k \phi_\infty^{(k)1} < \infty$ , where

$$\phi^{(k)}(\tau) = \sup_{t,T} |\text{cor}(Z_{t,T}^{(k)}, Z_{t+\tau,T}^{(k)})| \quad \text{and} \quad \phi_\infty^{(k)r} = \sum_{\tau} |\phi^{(k)}(\tau)|^r.$$

(A3) There exist constants  $\sigma^*, \sigma_* > 0$  such that  $\max_{k,t,T} \sigma^{(k)}(t/T) \leq \sigma^*$ , and given any change-

point  $\eta_q$  in  $\sigma^{(k)}(t/T)$ ,

$$\left| \sigma^{(k)}\left(\frac{\eta_q + 1}{T}\right) - \sigma^{(k)}\left(\frac{\eta_q}{T}\right) \right| > \sigma_*$$

uniformly for all  $k = 1, \dots, d$ .

(A4)  $d$  and  $T$  satisfy  $d \cdot T^{-\log T} \rightarrow 0$ .

In particular, condition (A4) specifies the maximum rate at which the dimensionality  $d$  of model (1) is permitted to increase with the sample size  $T$ . Denoting the estimated change-points (sorted in increasing order) by  $\hat{\eta}_q$ ,  $q = 1, \dots, \hat{N}$ , we have the following result.

**Theorem 1.** Let  $\Delta_T \asymp \epsilon_T$  in the SBS algorithm. Under (A1)–(A4), there exists  $C_1 > 0$  such that  $\hat{\eta}_q$ ,  $q = 1, \dots, \hat{N}$  satisfy

$$\mathbb{P} \left\{ \hat{N} = N; |\hat{\eta}_q - \eta_q| < C_1 \epsilon_T \text{ for } q = 1, \dots, N \right\} \rightarrow 1$$

as  $T \rightarrow \infty$ , where

- if  $\delta_T \asymp T$ , there exists some positive constant  $\kappa$  such that we have  $\epsilon_T = \log^{2+\vartheta} T$  with  $\pi_T = \kappa \log^{1+\omega} T$  for any positive constants  $\vartheta$  and  $\omega > \vartheta/2$ .
- if  $\delta_T \asymp T^\Theta$  for  $\Theta \in (3/4, 1)$ , we have  $\epsilon_T = T^\theta$  for  $\theta = 2 - 2\Theta$  with  $\pi_T = \kappa T^\gamma$  for some  $\kappa > 0$  and any  $\gamma \in (1 - \Theta, \Theta - 1/2)$ .

We may define the optimality in change-point detection as when each of the true change-points and the corresponding estimated change-point are within the distance of  $O_p(1)$ , see e.g. Korostelev (1987). In this sense, when  $\delta_T \asymp T$ , the rate of  $\epsilon_T$  is near-optimal up to a logarithmic factor.

### 2.3 Post-processing of the change-points

We further equip the SBS algorithm with an extra step aimed at reducing the risk of over-estimating the number of change-points. The step is completely analogous to the corresponding step in the UBS algorithm (see Cho and Fryzlewicz (2012), Section 3.2.1), except it now involves checks of the form

$$\exists k \quad \mathcal{Y}_{\hat{\eta}_{q-1}+1, \hat{\eta}_q, \hat{\eta}_{q+1}}^{(k)} > \pi_T, \tag{7}$$

with the convention  $\hat{\eta}_0 = 0$ ,  $\hat{\eta}_{\hat{N}+1} = T - 1$ . In other words, we compute the CUSUM statistic  $\mathcal{Y}_{\cdot, \cdot, \cdot}^{(k)}$  on each triple of neighboring change-point estimates for each  $k$  and only retain those  $\hat{\eta}_q$ 's for which that statistic exceeds the threshold  $\pi_T$  for at least one  $k$ . The reader is referred to the above work for details. As in the UBS algorithm, the consistency result of Theorem 1 is preserved even after performing this extra post-processing.

### 3 The SBS algorithm in the multivariate LSW model

In this section, we demonstrate how the SBS algorithm can be used for detecting multiple change-points in the second-order (i.e. auto-covariance and cross-covariance) structure of multivariate, possibly high-dimensional time series.

For this purpose, we first define the multivariate LSW model, in which wavelets act as building blocks analogous to the Fourier exponentials in the classical Cramér representation for stationary processes. Our choice of the LSW model as the theoretical setting is motivated by the attractive features of the univariate LSW model, listed in Cho and Fryzlewicz (2012).

As the simplest example of a wavelet system, we consider Haar wavelets defined as

$$\psi_{i,k}^H = 2^{i/2}\mathbb{I}(0 \leq k \leq 2^{-i-1} - 1) - 2^{i/2}\mathbb{I}(2^{-i-1} \leq k \leq 2^{-i} - 1),$$

where  $i \in \{-1, -2, \dots\}$  and  $k \in \mathbb{Z}$  denote scale and location parameters, respectively. Small negative values of the scale parameter  $i$  denote “fine” scales where the wavelet vectors are the most localized and oscillatory, while large negative values denote “coarser” scales with longer, less oscillatory wavelet vectors. For a more detailed introduction to wavelets, see e.g. Nason and Silverman (1995) and Vidakovic (1999). With such wavelets as building blocks, we define the  $p$ -variate, piecewise stationary LSW model as follows.

**Definition 1.** The  $p$ -variate LSW process  $\{\mathbf{X}_{t,T} = (X_{t,T}^{(1)}, \dots, X_{t,T}^{(p)})'\}_{t=0}^{T-1}$  for  $T = 1, 2, \dots$ , is a triangular stochastic array with the following representation:

$$X_{t,T}^{(j)} = \sum_{i=-\infty}^{-1} \sum_{k=-\infty}^{\infty} W_i^{(j)}(k/T) \psi_{i,t-k} \xi_{i,k}^{(j)} \quad \text{for each } j = 1, \dots, p, \quad (8)$$

where  $\xi_{i,k} = (\xi_{i,k}^{(1)}, \xi_{i,k}^{(2)}, \dots, \xi_{i,k}^{(p)})'$  are independently generated from multivariate normal distributions  $\mathcal{N}_p(\mathbf{0}, \Sigma_i(k/T))$ , with  $\Sigma_i^{(j,j)}(k/T) \equiv 1$  and

$$\text{cov}(\xi_{i,k}^{(j)}, \xi_{i',k'}^{(l)}) = \begin{cases} \delta_{i,i'} \delta_{k,k'} \cdot \Sigma_i^{(j,j)}(k/T) = \delta_{i,i'} \delta_{k,k'} & \text{when } j = l, \\ \delta_{i,i'} \delta_{k,k'} \cdot \Sigma_i^{(j,l)}(k/T) & \text{when } j \neq l. \end{cases}$$

The parameters  $i \in \{-1, -2, \dots\}$  and  $k \in \mathbb{Z}$  denote scale and location, respectively, and the Kronecker delta function  $\delta_{i,i'}$  returns 1 when  $i = i'$  and 0 otherwise. For each  $i$  and  $j, l = 1, \dots, p$ , the functions  $W_i^{(j)}(k/T) : [0, 1] \rightarrow \mathbb{R}$  and  $\Sigma_i^{(j,l)}(k/T) : [0, 1] \rightarrow \mathbb{R}$  are piecewise constant with an unknown number of change-points, and we denote the sets of change-points as

$$\begin{aligned} \mathbb{B}_i^{(j)} &= \{z \in (0, 1) : \lim_{u \rightarrow z-} W_i^{(j)}(u) \neq \lim_{u \rightarrow z+} W_i^{(j)}(u)\}, \quad \text{and} \\ \mathbb{B}_i^{(j,l)} &= \{z \in (0, 1) : \lim_{u \rightarrow z-} \Sigma_i^{(j,l)}(u) \neq \lim_{u \rightarrow z+} \Sigma_i^{(j,l)}(u)\}. \end{aligned}$$

In comparison to the Cramér representation for stationary processes, the functions  $W_i^{(j)}(k/T)$  can be thought of as scale- and location-dependent transfer functions, while the wavelet vectors  $\boldsymbol{\psi}_i$  can be thought of as building blocks analogous to the Fourier exponentials.

The autocovariance and the cross-covariance functions of  $X_{t,T}^{(j)}$ ,  $j = 1, \dots, p$ , defined in Section 3.1.1 below, inherit the piecewise-constancy of  $W_i^{(j)}(\cdot)$  and  $\Sigma_i^{(j,l)}(\cdot)$ , with identical change-point locations. We denote the set of those change-points by

$$\mathbb{B} = \left\{ \bigcup_{j=1}^p \mathbb{B}^{(j)} \right\} \cup \left\{ \bigcup_{j,l=1}^p \mathbb{B}^{(j,l)} \right\} \equiv \{\nu_r, r = 1, \dots, N\}. \quad (9)$$

### 3.1 Wavelet periodograms and cross-periodograms

In this section, we construct particular wavelet-based local periodogram sequences from the LSW time series  $\mathbf{X}_{t,T}$  in (8), to which the SBS algorithm of Section 2.1 will be applied in order to detect the change-points in the second-order structure of  $\mathbf{X}_{t,T}$ .

Recall that in examples (A)–(B) of Section 2.1, the multiplicative sequences were constructed as  $Y_{t,T}^{(k)} = 2^{-1}(X_{t+1,T}^{(k)} - X_{t,T}^{(k)})^2$ . Note that each element of  $Y_{t,T}^{(k)}$  is simply the squared wavelet coefficient of  $X_{t,T}^{(k)}$  with respect to Haar wavelets at scale  $-1$ , i.e.

$$Y_{t,T}^{(k)} = 2^{-1}(X_{t,T}^{(k)} - X_{t-1,T}^{(k)})^2 = \left( \sum_u X_{u,T}^{(k)} \psi_{-1,t-u}^H \right)^2,$$

or the (Haar) *wavelet periodogram* of  $X_{t,T}^{(k)}$  at scale  $-1$ . In the two examples, it was shown that the change-points in the AR coefficients of  $X_{t,T}^{(k)}$  (and hence in its second-order structure) were detectable from the wavelet periodograms. In this section, we study the properties of the wavelet periodogram and cross-periodogram sequences, and discuss the applicability of the SBS algorithm to the segmentation of  $\mathbf{X}_{t,T}$  defined as (8), with the wavelet periodograms and cross-periodograms of  $\mathbf{X}_{t,T}$  as an input.

#### 3.1.1 Definitions and properties

Given a  $p$ -variate LSW time series  $\mathbf{X}_{t,T} = (X_{t,T}^{(1)}, \dots, X_{t,T}^{(p)})'$ , its empirical wavelet coefficients at scale  $i$  are denoted by  $w_{i,t,T}^{(j)} = \sum_u X_{u,T}^{(j)} \psi_{i,t-u}$  for each  $X_{t,T}^{(j)}$ ,  $j = 1, \dots, p$ . Then, the *wavelet periodogram* of  $X_{t,T}^{(j)}$  and the *wavelet cross-periodogram* between  $X_{t,T}^{(j)}$  and  $X_{t,T}^{(l)}$  at scale  $i$  are defined as

$$I_{i,t,T}^{(j,j)} \equiv I_{i,t,T}^{(j)} = |w_{i,t,T}^{(j)}|^2 \quad \text{and} \quad I_{i,t,T}^{(j,l)} = w_{i,t,T}^{(j)} \cdot w_{i,t,T}^{(l)},$$

respectively. The Gaussianity of  $X_{t,T}^{(j)}$  implies the Gaussianity of  $w_{i,t,T}^{(j)}$ , and hence  $I_{i,t,T}^{(j)}$  and  $I_{i,t,T}^{(j,l)}$  admit the following decompositions:

$$I_{i,t,T}^{(j)} = \mathbb{E}I_{i,t,T}^{(j)} \cdot Z_{t,T}^{(j)2}, \quad t = 0, \dots, T-1, \quad (10)$$

$$I_{i,t,T}^{(j,l)} = \mathbb{E}I_{i,t,T}^{(j,l)} \cdot Z_{t,T}^{(j)} Z_{t,T}^{(l)}, \quad t = 0, \dots, T-1, \quad (11)$$

where  $\{Z_{t,T}^{(j)}\}_{t=0}^{T-1}$  is a sequence of (correlated and nonstationary) standard normal variables for each  $j = 1, \dots, p$ . Therefore each  $I_{i,t,T}^{(j)}$  follows a scaled  $\chi_1^2$  distribution.

It has been shown in the literature that for a univariate LSW process  $X_{t,T}$ , there exists an asymptotic one-to-one correspondence between its time-varying autocovariance functions  $c_T(z, \tau) = \text{cov}(X_{\lfloor zT \rfloor, T}, X_{\lfloor zT \rfloor + \tau, T})$ ,  $\tau = 0, 1, \dots$ , transfer functions  $W_i^2(z)$ , and the expectations of wavelet periodograms  $\mathbb{E}I_{i,t,T}$  at multiple scales (see e.g. Cho and Fryzlewicz (2012)). That is, any change-points in the set of piecewise constant functions  $\{W_i^2(z)\}_i$  correspond to change-points in the (asymptotic limits of the) autocovariance functions  $\{c_T(z, \tau)\}_\tau$ , which in turn correspond to the change-points in the (asymptotic limits of the) functions  $\{\mathbb{E}I_{i,t,T}\}_i$ , and thus are asymptotically detectable by examining  $I_{i,t,T}$ ,  $i = -1, -2, \dots$ . For a multivariate LSW process  $\mathbf{X}_{t,T}$ , its autocovariance and cross-covariance functions are defined as

$$c_T^{(j,j)}(z, \tau) = c_T^{(j)}(z, \tau) = \text{cov}(X_{\lfloor zT \rfloor, T}^{(j)}, X_{\lfloor zT \rfloor + \tau, T}^{(j)}) \quad \text{and} \quad c_T^{(j,l)}(z, \tau) = \text{cov}(X_{\lfloor zT \rfloor, T}^{(j)}, X_{\lfloor zT \rfloor + \tau, T}^{(l)}). \quad (12)$$

In the multivariate LSW model, analogous one-to-one correspondence can be shown for any pair of  $X_{t,T}^{(j)}$  and  $X_{t,T}^{(l)}$  between the following quantities: the autocovariance and cross-covariance functions  $c_T^{(j)}(z, \tau)$ ,  $c_T^{(l)}(z, \tau)$  and  $c_T^{(j,l)}(z, \tau)$  at lags  $\tau = 0, 1, \dots$ , piecewise constant functions  $\{W_i^{(j)}(z)\}_i^2$ ,  $\{W_i^{(l)}(z)\}_i^2$  and  $\Sigma_i^{(j,l)}(z)$ , and the expectations of wavelet periodograms and cross-periodograms  $\mathbb{E}I_{i,t,T}^{(j)}$ ,  $\mathbb{E}I_{i,t,T}^{(l)}$  and  $\mathbb{E}I_{i,t,T}^{(j,l)}$  at scales  $i = -1, -2, \dots$ . Therefore, any change-points in the second-order structure of the multivariate time series  $\mathbf{X}_{t,T}$  are detectable from the wavelet periodograms and cross-periodograms at multiple scales. Formal derivation of this one-to-one correspondence is provided in Appendix B.

Thus we now focus on wavelet periodogram  $I_{i,t,T}^{(j)}$  and cross-periodogram  $I_{i,t,T}^{(j,l)}$  as the input to the SBS algorithm. We firstly note that  $\mathbb{E}I_{i,t,T}^{(j)}$  are piecewise constant except for negligible biases around the change-points (which are accounted for in our results, see Section B.1 in the Appendix), and thus  $I_{i,t,T}^{(j)}$  “almost” follow the multiplicative model (1). However,  $I_{i,t,T}^{(j,l)}$  is not of the form specified in (1) and the next section introduces an alternative to  $I_{i,t,T}^{(j,l)}$  which does follow (1) (again, up to the negligible biases) and contains the same information about the change-points as does  $I_{i,t,T}^{(j,l)}$ .

### 3.1.2 Non-negative multiplicative alternative to the cross-periodogram

To gain an insight into obtaining a possible alternative to  $I_{i,t,T}^{(j,l)}$ , we first present a toy example. Consider two sequences of zero-mean, serially independent normal variables  $\{a_t\}_{t=1}^T$  and  $\{b_t\}_{t=1}^T$  where the correlation between  $a_t$  and  $b_t$  satisfies  $\text{cor}(a_t, b_t) = 0$  for  $t \leq \lfloor T/2 \rfloor$  and  $\text{cor}(a_t, b_t) = 0.9$

for  $t \geq \lfloor T/2 \rfloor + 1$ , while  $\text{var}(a_t)$  and  $\text{var}(b_t)$  are constant over time. The change in the second-order structure of  $(a_t, b_t)'$  originates solely from the change in the correlation between the two sequences, and thus cannot be detected from  $\{a_t^2\}_{t=1}^T$  and  $\{b_t^2\}_{t=1}^T$  alone. Figure 3 confirms this, and it is the sequence  $\{(a_t - b_t)^2\}_{t=1}^T$  that exhibits the change-point more prominently than  $\{a_t b_t\}_{t=1}^T$  or  $\{(a_t + b_t)^2\}_{t=1}^T$ .

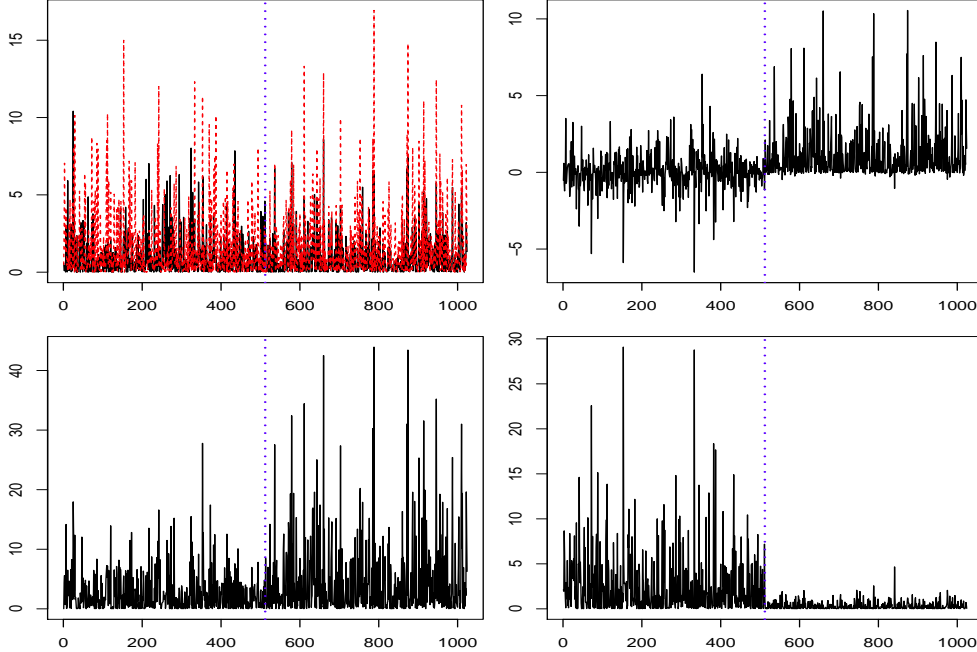


Figure 3: Top left:  $a_t^2$  (solid) and  $b_t^2$  (broken) from the example of Section 3.1.2; top right:  $a_t \cdot b_t$ ; bottom left:  $(a_t + b_t)^2$ ; bottom right  $(a_t - b_t)^2$ ; dotted vertical lines denote where  $(a_t, b_t)'$  have change-points.

Identifying  $a_t$  with  $w_{i,t,T}^{(j)}$  and  $b_t$  with  $w_{i,t,T}^{(l)}$ , it becomes apparent that we may detect any change in the covariance structure between  $w_{i,t,T}^{(j)}$  and  $w_{i,t,T}^{(l)}$  by examining  $I_{i,t,T}^{(j)}$ ,  $I_{i,t,T}^{(l)}$ , and either  $(w_{i,t,T}^{(j)} + w_{i,t,T}^{(l)})^2$  or  $(w_{i,t,T}^{(j)} - w_{i,t,T}^{(l)})^2$  instead of  $I_{i,t,T}^{(j,l)} = w_{i,t,T}^{(j)} w_{i,t,T}^{(l)}$ . Since each variable  $w_{i,t,T}^{(j)}$  is zero-mean normal, both  $(w_{i,t,T}^{(j)} \pm w_{i,t,T}^{(l)})^2$  are scaled  $\chi_1^2$  variables, and so either of these sequences can serve as an input to the SBS algorithm. While both lead to identical results theoretically, there remains the choice between the signs  $\pm$  to optimize finite-sample performance. Our empirical observation is that the choice

$$\tilde{I}_{i,t,T}^{(j,l)} = \left( w_{i,t,T}^{(j)} - \text{sign} \left( \widehat{\text{cor}}(w_{i,t,T}^{(j)}, w_{i,t,T}^{(l)}) \right) \cdot w_{i,t,T}^{(l)} \right)^2, \quad (13)$$

where  $\widehat{\text{cor}}(\cdot, \cdot)$  is the sample correlation computed separately on each current segment, performs well, and we adopt it in practice. In summary, the multiplicative sequences that comprise the input to the SBS algorithm are  $I_{i,t,T}^{(j)}$  and  $\tilde{I}_{i,t,T}^{(j,l)}$  for  $j, l = 1, \dots, p$ .

### 3.2 Application of the SBS algorithm to multivariate time series

We expect  $I_{i,t,T}^{(j)}$  ( $\tilde{I}_{i,t,T}^{(j,l)}$ ) at finer scales to provide more accurate information on the presence and locations of the change-points in  $\mathbb{E}I_{i,t,T}^{(j)}$  ( $\mathbb{E}\tilde{I}_{i,t,T}^{(j,l)}$ ), while those at coarser scales to be of limited use. This is due to the increasing length  $\mathcal{L}_i$  of the support of the wavelet vectors  $\psi_i$  at coarser scales, as well as the resulting increasing autocorrelation in  $\{w_{i,t,T}^{(j)}\}_{t=0}^{T-1}$ . In addition, since the number of periodogram and cross-periodogram sequences increases by  $p(p+1)/2$  with each scale added, limiting the number of scales also carries clear computational benefits, especially in high dimensions. Therefore we propose to consider  $I_{i,t,T}^{(j)}$  and  $\tilde{I}_{i,t,T}^{(j,l)}$  scale by scale, starting from the finest scale  $i = -1$  and ending with scale  $I_T^* = -\lfloor \alpha \log \log T \rfloor$  with  $\alpha \in (0, 2 + \vartheta]$ , with the latter choice being made to guarantee consistency of our procedure.

Having detected the change-points at each scale separately, we then reduce the set of estimated change-points such that those estimated on different scales yet indicating the same change-point, are combined into one with high probability. This is done in the same way as in the univariate case and is described in detail in Cho and Fryzlewicz (2012). Here, we only mention that this across-scales post-processing procedure involves a parameter  $\Lambda_T$  which determines the maximum diameter of the initial clusters of change-points originating from different scales.

Summarizing the above arguments, we propose the following algorithm for the segmentation of multivariate time series with piecewise constant second-order structure. We label it SBS-MVTS (Sparsified Binary Segmentation for MultiVariate Time Series). Its core ingredient is the SBS algorithm, described in Section 2.1.

#### SBS-MVTS algorithm

**Step 0** Set the scale parameter to  $i = -1$  (the finest scale).

**Step 1** Apply the SBS algorithm as well as the post-processing step of Section 2.3 to the  $d \equiv p(p+1)/2$  sequences  $I_{i,t,T}^{(j)}$ ,  $j = 1, \dots, p$  and  $\tilde{I}_{i,t,T}^{(j,l)}$ ,  $j \neq l; j, l = 1, \dots, p$ , and denote the detected change-points by  $\hat{\nu}_{i,r}$ ,  $r = 1, \dots, \hat{N}_i$ .

**Step 2** Update  $i \leftarrow i - 1$  and repeat Step 1 until  $i$  reaches  $I_T^*$ . Apply the across-scales post-processing (described earlier in this section) to the change-points  $\hat{\nu}_{i,r}$ ,  $r = 1, \dots, \hat{N}_i$  detected from the scales  $i = -1, \dots, I_T^*$ , and obtain the final set of estimated change-points  $\hat{\nu}_r$ ,  $r = 1, \dots, \hat{N}$ .

The following theorem demonstrates that the consistency of the SBS algorithm for the multiplicative sequences in (1) carries over to that of the SBS-MVTS algorithm, provided that the  $p$ -variate LSW time series  $\mathbf{X}_{t,T}$  on input satisfies conditions (B1)–(B5) (in Appendix B), which are analogues of conditions (A1)–(A4) but phrased in the specific context of LSW processes. In particular, condition (B5) states that the dimensionality  $p$  of the input time series  $\mathbf{X}_{t,T}$  is permitted to increase with  $T$  as long as  $p^2 T^{-\log T} \rightarrow 0$ .

**Theorem 2.** Let  $\Delta_T \asymp \epsilon_T$  in the SBS algorithm and  $\Lambda_T \asymp \epsilon_T$  in the across-scales post-processing. Under (B1)–(B5), there exists  $C_2 > 0$  such that  $\hat{\nu}_r$ ,  $r = 1, \dots, \hat{N}$  estimated with  $I_T^* = -\lfloor \alpha \log \log T \rfloor$  for  $\alpha \in (0, 2 + \vartheta]$ , satisfy

$$\mathbb{P} \left\{ \hat{N} = N; |\hat{\nu}_r - \nu_r| < C_2 \epsilon_T \text{ for } r = 1, \dots, N \right\} \rightarrow 1$$

as  $T \rightarrow \infty$ , where

- if  $\delta_T \asymp T$ , there exists some positive constant  $\kappa$  such that we have  $\epsilon_T = \log^{2+\vartheta} T$  with  $\pi_T = \kappa \log^{1+\omega} T$  for any positive constants  $\vartheta$  and  $\omega > \vartheta/2$ .
- if  $\delta_T \asymp T^\Theta$  for  $\Theta \in (3/4, 1)$ , we have  $\epsilon_T = T^\theta$  for  $\theta = 2 - 2\Theta$  with  $\pi_T = \kappa T^\gamma$  for some  $\kappa > 0$  and any  $\gamma \in (1 - \Theta, \Theta - 1/2)$ .

### 3.3 Practical choice of threshold and other quantities

The aim of this section is to provide some practical guidance as to the choice of various parameters of the SBS-MVTS algorithm. We provide heuristic justification for the chosen values below. They have been found to work well in our extensive simulation studies across a range of models; however, we do not claim that other values would not work equally well or better in practice.

Importantly, we also note that the necessity of calibrating these parameters is not specific to the SBS-MVTS algorithm in the sense that they would also need to be set if, for example,  $\tilde{y}_t^{\text{avg}}$  or  $\tilde{y}_t^{\text{max}}$  were used instead of  $\tilde{y}_t^{\text{thr}}$  in a binary segmentation framework.

From the conditions of Theorem 1, we have  $\gamma \in (1 - \Theta, \Theta - 1/2)$  in the threshold  $\pi_T = \kappa T^\gamma$  when  $\Theta \in (3/4, 1)$ , while  $\omega$  is any positive constant greater than  $\vartheta/2$  in  $\pi_T = \kappa \log^{1+\omega} T$  when  $\Theta = 1$ . We propose to set  $\gamma$  as conservatively as  $\gamma = 0.499$  and focus on the choice the constant  $\kappa$  for each  $X_{t,T}^{(j)}$ , by simulating wavelet periodograms under the null hypothesis of no change-points as below. With this approach to the selection of  $\kappa$ , finite sample performance is little affected by whether  $T^\gamma$  or  $\log^{1+\omega} T$  is used as the rate of  $\pi_T$ , and thus we do not expand on the choice of  $\omega$  here.

For each univariate process  $X_{t,T}^{(j)}$ , we estimate  $\hat{a}_j$ , its lag-one autocorrelation. Then, generating AR(1) time series of length  $T$  with the AR parameter  $\hat{a}_j$  repeatedly  $R$  times, we compute the following statistic for each realization  $m$ :

$$\mathbb{J}_i^{(j,m)} = \max_t \left( \frac{1}{T} \sum_{u=1}^T I_{i,u}^{(j,m)} \right)^{-1} \left| \sqrt{\frac{T-t}{T \cdot t}} \sum_{u=1}^t I_{i,u}^{(j,m)} - \sqrt{\frac{t}{T(T-t)}} \sum_{u=t+1}^T I_{i,u}^{(j,m)} \right|,$$

where  $I_{i,t}^{(j,m)}$  denotes the scale  $i$  wavelet periodogram of the  $m$ th AR(1) process generated with the AR parameter  $\hat{a}_j$ . Note that  $\mathbb{J}_i^{(j,m)}$  is of the same form as the test statistic used in the SBS algorithm. Since the AR processes have been generated under the null hypothesis of no change-points in their second-order structure,  $T^{-\gamma} \mathbb{J}_i^{(j,m)}$  may serve as a proxy for  $\kappa$  for the wavelet periodograms generated from  $X_{t,T}^{(j)}$ . We have observed that the values of  $\mathbb{J}_i^{(j,m)}$  tend to increase at coarser scales due to the increasing support of the wavelet vector  $\psi_i$ . Therefore, we select  $\kappa$  to be scale-dependent as  $\kappa_i^{(j)}$  for



each  $i = -1, -2, \dots$  and  $j = 1, \dots, p$ . In the SBS algorithm, we choose it to be the 99%-quantile of  $T^{-\gamma} \mathbb{J}_i^{(j,m)}$  over all  $m = 1, \dots, R$ . In the case of wavelet cross-periodograms, we use the first-lag sample autocorrelation of  $X_{t,T}^{(j)} - \text{sign}\{\widehat{\text{cor}}(w_{i,t,T}^{(j)}, w_{i,t,T}^{(l)})\} X_{t,T}^{(l)}$  in place of  $\widehat{a}_j$ .

As for the choice of  $\Delta_T$  in Step 2.3 of the SBS algorithm, since  $\Delta_T \asymp \epsilon_T$ , we choose  $\Delta_T = \lfloor \sqrt{T}/2 \rfloor$  to be on conservative side and use it in our implementation for the simulations study reported in the next section. Also we use  $\alpha = 2$  and  $\Lambda_T = \lfloor \sqrt{T}/2 \rfloor$ . Finally, rather than choosing a fixed constant as  $c_*$ , we make sure that a newly detected change-point is distanced from the previously detected change-points by at least  $\Delta_T$ .

## 4 Simulation study

In this section, we study the performance of the SBS-MVTS algorithm on simulated multivariate time series with time-varying second-order structure. All simulated datasets are generated with  $T = 1024$ , and the sparsity of the change-points across the  $p$ -dimensional time series is controlled such that  $\lfloor \varrho p \rfloor$  processes out of the  $p$  have at least one change-point, from a sparse case ( $\varrho = 0.05$ ) through moderate cases ( $\varrho = 0.25, 0.5$ ) to a dense case ( $\varrho = 1$ ).

### (M1) Autoregressive (AR) time series.

We simulate the  $p$  time series as AR(1) processes

$$X_t^{(j)} = \alpha^{(j)} X_{t-1}^{(j)} + \sigma^{(j)} \epsilon_t^{(j)}, \quad j = 1, \dots, p. \quad (14)$$

The AR coefficients are independently generated from the uniform distribution  $\mathcal{U}(-0.5, 0.999)$ , and  $\sigma^{(j)}$  from  $\mathcal{U}(1/2, 2)$ . The error terms  $\epsilon_t = (\epsilon_t^{(1)}, \dots, \epsilon_t^{(p)})'$  are generated from  $\mathcal{N}_p(\mathbf{0}, \Sigma_\epsilon)$  with  $\Sigma_\epsilon$  specified below. There are three change-points located at  $t = 341, 614, 838$  which occur in the following ways.

**(M1.1)** At each change-point, both  $\alpha^{(j)}$  and  $\sigma^{(j)}$  are re-generated for randomly chosen  $\lfloor \varrho p \rfloor$  time series  $X_t^{(j)}$ , while  $\Sigma_\epsilon = 4 \cdot \mathbf{I}_p$  and remains unchanged throughout.

**(M1.2)** Originally,  $\epsilon_t$  is generated with a block-diagonal variance-covariance matrix  $\Sigma_\epsilon = (\Sigma_{j,l})_{j,l=1}^p$ , where  $\Sigma_{j,j} = 4$  for  $j = 1, \dots, p$ , and  $\Sigma_{j,l} = 4(-0.95)^{|j-l|}$  for  $j, l = 1, \dots, p/2$  and zero elsewhere. The cross-correlation structure of  $\epsilon_t$  changes at each change-point as the locations of randomly chosen  $\lfloor \varrho p/2 \rfloor$  elements of  $\epsilon_t$  are swapped with those of other  $\lfloor \varrho p/2 \rfloor$  randomly chosen elements on each stationary segment.

This model has been chosen for the simplicity of the AR(1) dependence structure and for the fact that it permits easy manipulation of the cross-dependence between the component series.

### (M2) Factor models.

The  $p$  time series are generated from a factor model

$$\mathbf{X}_t = \mathbf{A} \boldsymbol{\eta}_t + \boldsymbol{\varepsilon}_t,$$

where  $\mathbf{A}$  is a  $p \times 5$  factor loading matrix with each element  $A_{j,l}$  generated from a uniform distribution  $\mathcal{U}(0.5, 1.5)$ . The vector  $\boldsymbol{\eta}_t$  contains five factors, each of which is an independent AR(1) time series generated as  $X_t^{(j)}$  in (14) with  $\boldsymbol{\Sigma}_\epsilon = 4 \cdot \mathbf{I}_p$ . The error terms  $\boldsymbol{\epsilon}_t$  follow  $\mathcal{N}_p(\mathbf{0}, \boldsymbol{\Sigma}_\epsilon)$  with the same covariance matrix as that in (M1.2). There are three change-points located at  $t = 341, 614, 838$  which occur in the following ways.

**(M2.1)** At each change-point,  $\lfloor \varrho p \rfloor$  randomly chosen rows of the factor loading matrix  $\mathbf{A}$  are re-generated, each from  $\mathcal{N}(0, 1)$ .

**(M2.2)** The cross-correlation structure of  $\boldsymbol{\epsilon}_t$  changes as in (M1.2).

The aim of this model is to investigate the performance of our algorithm when the dependence structure is governed by a factor model, a popular dimensionality reduction tool for high-dimensional time series.

**(M3) AR(1)+MA(2) model.**

In this example, the  $p$ -variate time series  $\mathbf{X}_t$  is generated such that,

$$X_t^{(j)} = \begin{cases} \epsilon_t^{(j)} + \beta_1^{(j)} \epsilon_{t-1}^{(j)} + \beta_2^{(j)} \epsilon_{t-2}^{(j)} & \text{for } 1 \leq t \leq 512, \\ \alpha^{(j)} X_t^{(j)} + \sigma^{(j)} \epsilon_t^{(j)} & \text{for } 513 \leq t \leq 1024, \end{cases}$$

for  $j = 1, \dots, \lfloor \varrho p \rfloor$ , and  $X_t^{(j)}$ ,  $j = \lfloor \varrho p \rfloor + 1, \dots, p$  are stationary AR(1) processes with the AR parameters generated from  $\mathcal{U}(-0.5, 0.999)$  and  $\text{var}(\epsilon_t^{(j)}) = 1$ . The coefficients  $\beta_1^{(j)}$ ,  $\beta_2^{(j)}$ ,  $\alpha^{(j)}$  and  $\sigma^{(j)}$  are generated such that for  $X_t^{(j)}$ ,  $j = 1, \dots, \lfloor \varrho p \rfloor$ , the variance and the first-lag autocorrelation remain constant before and after the change-point at  $t = 512$ , while autocorrelations at other lags have a change-point at  $t = 512$ . The purpose of this model is to investigate whether the SBS-MVTS algorithm can perform well when the change-points are not detectable at the finest scale  $i = -1$ .

**(M4) Short segment.**

Inspired by the example (B) of Section 2.1, the  $p$ -variate time series  $\mathbf{X}_t$  is generated such that the first  $\lfloor \varrho p \rfloor$  processes follow

$$X_t^{(j)} = \begin{cases} \alpha^{(j)} X_t^{(j)} + \epsilon_t^{(j)} & \text{for } 1 \leq t \leq 100, \\ \beta^{(j)} X_t^{(j)} + \epsilon_t^{(j)} & \text{for } 101 \leq t \leq 1024, \end{cases}$$

with  $\alpha^{(j)}$  drawn from  $\mathcal{U}(0.5, 0.59)$  and  $\beta^{(j)}$  from  $\mathcal{U}(-0.79, -0.5)$ . The remaining  $(p - \lfloor \varrho p \rfloor)$  time series are generated as stationary AR(1) processes with the AR parameters drawn from the same distribution as  $\beta^{(j)}$ . The purpose of this model is to investigate if the SBS-MVTS algorithm performs well when the finest scale wavelet periodograms suffer from high autocorrelation while at the same time, the two stationary segments defined by the change-point are of substantially different lengths.

Most methods for multivariate time series segmentation proposed in the literature, such as those cited in the Introduction, have not been designed for data of the dimensionality or size considered in this paper, which are  $p = 50, 100$  and  $T = 1024$ , respectively (recall that  $d$  is quadratic in  $p$ ).

In what follows, we compare the performance of the SBS-MVTS algorithm to that of identical binary segmentation algorithms but constructed using  $\tilde{y}_t^{\text{avg}}$  and  $\tilde{y}_t^{\text{max}}$  in (4) instead of  $\tilde{y}_t^{\text{thr}}$ . For clarity, in the remainder of this section, we refer to the three algorithms as THR (=SBS-MVTS), AVG and MAX. Identical thresholds  $\pi_T$  are applied in the THR and MAX. As for the AVG, we test  $\tilde{y}_t^{\text{avg}}$  using a scaled threshold  $d^{-1} \sum_{k=1}^d \mathbb{I}(\max_{t \in (s,e)} \mathcal{Y}_{s,t,e}^{(k)} > \pi_T) \cdot \pi_T$  to ensure fairer comparison. As an aside, we note that the threshold selection via simulation is easier for the THR and MAX algorithms than for the AVG algorithm, the reason being that in the former two cases it can be reduced to the problem of threshold selection for univariate time series, which is not the case for AVG.

Tables 1–4 report the results of applying the three segmentation algorithms to the simulated datasets from (M1)–(M4). Each table reports the mean and standard deviation of the total number of detected change-points over 100 simulated time series, and the percentage of “correctly” identifying each change-point in the time series (in the sense that it lies within the distance of  $\lfloor \sqrt{T}/2 \rfloor$  from the true change-points).

Overall, it is evident that the THR algorithm outperforms the other two. In particular, the performance of AVG does not match that of THR or MAX especially when the change-points are sparse: in some of the models, there is a tendency for AVG to overestimate the number of change-points. Besides, the standard deviation of the number of change-points detected by AVG tends to be larger than those for the other two algorithms.

In terms of the *number* of detected change-points, THR and MAX perform similarly well. However, the accuracy of the detected change-point *locations* is significantly better for THR than for MAX, especially in models (M3)–(M4). This is unsurprising as effectively, the MAX algorithm locates change-points based on one individual component of the input time series, while THR typically averages information across many components. We also note that the performance of the THR algorithm does not differ greatly between the cases when  $p = 50$  and when  $p = 100$ .

As noted earlier, the input sequences to the segmentation algorithms,  $I_{i,t,T}^{(j)}$  and  $\tilde{I}_{i,t,T}^{(j,l)}$ , have expectations which are almost piecewise constant but not completely so, due to negligible biases around the change-points (see Appendix B.1). In deriving Theorem 2, these biases have fully been taken into account, which implies that the consistency of SBS-MVTS is extended to the case where changes occur in the second-order structure of  $\mathbf{X}_{t,T}$  within a short period of time (to be precise, of length  $C(\log T)^\alpha$  for some  $C > 0$  and  $\alpha$  from  $I_T^*$ ), but not entirely synchronized. To confirm this, we performed a further simulation study where the  $p$ -variate time series was generated from (M3), except that the change-points were allowed to be anywhere within an interval of length  $\lfloor 2 \log T \rfloor$  around  $t = 512$ . Although not reported here, we obtained the change-point detection results with  $T = 1024$  and varying  $\rho$  and  $p$ , which were comparable to those reported in Table 3. More specifically, while the number of detected change-points had greater variance, the accuracy

Table 1: Summary of the change-points detected from (M1): mean and standard deviation of the total number of detected change-points, and the percentage of correctly identifying each change-point at  $t = 341, 614, 838$  over 100 simulated time series.

$\varrho$		$p = 50$						$p = 100$					
		(M1.1)			(M1.2)			(M1.1)			(M1.2)		
		THR	AVG	MAX	THR	AVG	MAX	THR	AVG	MAX	THR	AVG	MAX
0.05	mean	3.03	2.61	3.01	2.81	3.78	2.8	3.06	3	3.02	3.33	4.97	3.34
	sd	0.17	0.71	0.1	0.44	1.34	0.45	0.24	0.83	0.14	0.55	1.23	0.54
	$t = 341$	98	71	95	91	65	88	97	55	96	97	55	96
	$t = 614$	89	75	92	91	67	92	99	55	91	99	55	91
	$t = 838$	92	76	91	93	60	91	94	50	87	94	50	87
0.25	mean	3.03	3.23	3.07	3.01	4.8	3.03	3.08	3.27	3.14	3.02	4.92	3.01
	sd	0.17	0.58	0.26	0.1	1.13	0.17	0.27	0.57	0.4	0.14	1.24	0.1
	$t = 341$	100	100	86	100	73	89	98	100	84	100	65	87
	$t = 614$	89	100	91	100	57	88	89	99	88	100	66	93
	$t = 838$	99	99	95	100	55	92	99	100	92	100	66	88
0.5	mean	3.05	3.21	3.05	3.01	4.66	3	3.15	3.48	3.24	3.04	4.9	3.06
	sd	0.22	0.52	0.22	0.1	1.02	0	0.36	0.64	0.51	0.2	1.14	0.24
	$t = 341$	100	100	85	99	70	90	100	100	80	100	67	88
	$t = 614$	91	100	83	100	69	88	100	100	82	100	68	91
	$t = 838$	98	100	80	100	58	86	100	100	84	100	65	87
1	mean	3.07	3.25	3.13	3.01	4.76	3.04	3.11	3.59	3.24	3.04	5.03	3.09
	sd	0.26	0.52	0.37	0.1	1.1	0.2	0.31	0.81	0.45	0.24	1.27	0.29
	$t = 341$	98	100	72	100	61	88	100	100	65	100	75	84
	$t = 614$	99	100	82	100	65	83	100	100	79	100	73	88
	$t = 838$	100	100	89	100	63	85	100	100	88	100	67	84

Table 2: Summary of the change-points detected from (M2).

$\varrho$		$p = 50$						$p = 100$					
		(M2.1)			(M2.2)			(M2.1)			(M2.2)		
		THR	AVG	MAX	THR	AVG	MAX	THR	AVG	MAX	THR	AVG	MAX
0.05	mean	3.04	1.86	3.11	2.81	3.07	2.79	2.98	3.01	2.95	3.27	3.94	3.29
	sd	0.2	0.96	0.35	0.44	1.28	0.46	0.28	1	0.3	0.57	1.04	0.59
	$t = 341$	91	44	88	91	61	92	90	67	81	99	50	86
	$t = 614$	89	35	90	92	55	87	89	52	77	96	44	84
	$t = 838$	95	41	85	89	59	83	86	52	79	96	43	88
0.25	mean	3.02	3.07	3.05	3	4.11	3.01	3.01	3.43	3.05	3.01	4.42	3.01
	sd	0.14	0.76	0.22	0	0.96	0.1	0.1	0.78	0.22	0.1	1.16	0.1
	$t = 341$	95	66	93	98	70	95	93	77	80	100	71	88
	$t = 614$	95	66	91	100	74	86	90	69	84	100	79	92
	$t = 838$	93	58	85	100	70	93	94	74	84	100	70	91
0.5	mean	3.01	3.07	3.02	3	4.43	3.02	3.03	3.11	3.07	3	4.32	3.04
	sd	0.1	0.48	0.14	0	1.08	0.14	0.17	0.31	0.26	0	1.07	0.2
	$t = 341$	97	82	86	97	75	85	96	88	83	100	79	93
	$t = 614$	93	80	87	100	76	94	92	98	77	100	73	89
	$t = 838$	93	90	80	98	67	87	95	95	82	99	70	93
1	mean	3	3.1	3.01	3.01	4.05	3.02	3	3.2	3.03	3	4.27	3.05
	sd	0	0.36	0.1	0.1	1.08	0.14	0	0.57	0.17	0	1.12	0.22
	$t = 341$	99	71	94	99	71	94	94	100	84	98	70	86
	$t = 614$	99	72	89	99	72	89	93	100	89	100	78	86
	$t = 838$	100	69	91	100	69	91	94	100	81	100	66	80

in their locations was preserved even when the change-points were not aligned. Also, overall, the THR algorithm still outperformed the two other competitors in terms of both the total number of the detected change-points and their locations.

(We now abandon the THR notation and revert to the SBS-MVTS notation in the remainder of the paper.)

Table 3: Summary of the change-points detected from (M3).

$\varrho$		$p = 50$			$p = 100$		
		THR	AVG	MAX	THR	AVG	MAX
0.05	mean	0.63	0.03	0.69	1.08	0.09	0.98
	sd	0.53	0.17	0.49	0.46	0.32	0.62
	$t = 512$	51	1	49	72	3	64
0.25	mean	1.01	0.11	1.04	1.02	0.32	0.99
	sd	0.22	0.31	0.28	0.2	0.51	0.33
	$t = 512$	92	9	73	92	25	75
0.5	mean	1.01	0.31	1	1.05	0.47	1.07
	sd	0.17	0.51	0.28	0.22	0.56	0.29
	$t = 512$	92	29	77	90	39	68
1	mean	1.02	0.36	1.03	1.13	0.68	1.22
	sd	0.14	0.5	0.22	0.34	0.65	0.46
	$t = 512$	95	34	67	95	53	66

Table 4: Summary of the change-points detected from (M4).

$\varrho$		$p = 50$			$p = 100$		
		THR	AVG	MAX	THR	AVG	MAX
0.05	mean	0.99	1.03	0.98	0.88	4.12	0.89
	sd	0.52	1.49	0.51	0.38	2.06	0.37
	$t = 100$	80	35	73	80	87	78
0.25	mean	1.04	1.72	0.98	1.06	4.74	1.12
	sd	0.24	1.58	0.51	0.34	1.98	0.67
	$t = 100$	91	74	73	93	97	73
0.5	mean	1.14	2.1	1.03	1.09	5.56	1.09
	sd	0.47	1.64	0.41	0.32	2.26	0.38
	$t = 100$	92	92	74	97	100	62
1	mean	1.09	2.94	1.01	1.28	0.02	1.05
	sd	0.32	1.9	0.41	0.73	0.14	0.39
	$t = 100$	94	99	50	97	2	49

## 5 Detecting change-points in the component processes of S&P 500

We further study the performance of the SBS-MVTS algorithm by applying it to the multivariate time series of *daily closing prices* of the constituents of the S&P 500 stock market index. The period considered is between 1 January 2007 and 31 December 2011, overlapping with the period of the recent financial crisis. We have chosen only those 456 constituents that remained in the index over the entire period; the resulting time series is of dimensionality  $p = 456$  and length  $T = 1260$  (we recall that  $d$  is quadratic in  $p$  and therefore much larger than  $T$  in this example).

Before presenting the change-point detection results, we briefly mention the rationale behind our approach to this dataset. As noted in Section 3.1, the wavelet periodograms computed with Haar wavelets at scale  $i = -1$  take the form  $I_{i,t,T} = 2^{-1}(X_{t+1,T} - X_{t,T})^2$  and thus reflect the behaviour of return series, and these periodograms comprise the input multiplicative sequences to SBS-MVTS. Mikosch and Stărică (2004) discussed that the “stylized facts” observable in financial time series, such as long range dependence of the absolute returns, might be artifacts induced by change-points in the second-order structure of the series. It was further discussed in Fryzlewicz (2005) where a class of Gaussian LSW time series was shown to embed these stylized facts.

When first applied to the first 100 component processes, the algorithm returns  $t = 67, 129, 198, 276, 427, 554, 718, 864, 1044, 1147$  as change-points. We then apply the algorithm to the first 200

processes to obtain  $t = 67, 126, 198, 270, 333, 427, 554, 652, 718, 867, 1022, 1086, 1148$  as change-points. Comparing the two sets of detected change-points, it is reassuring to see that those from the former set also appear to have their counterparts in the latter, as expected, since the latter dataset contains the former. When applied to the entire  $p$ -variate time series, the SBS-MVTS algorithm returns the change-points summarized in Table 5, which also lists some historical events that occurred close to some of the detected change-points.

The TED spread is the difference between the interest rate at which the US Government is able to borrow over a three month period (T-bill) and the rate at which banks lend to each other over the same period (measured by the Libor), and therefore can serve as an indicator of perceived credit risk in the general economy. During 2007, the TED spread rapidly increased to around 150–200 basis points (bps), which coincided with the “subprime” mortgage crisis, and in mid-September 2008, it exceeded 300 bps. In 2010, it returned to its long-term average of 30 bps. However, it started rising again with the beginning of the European debt crisis, and reached above 45 bps by mid-June. The volatile behaviour of the TED spread during 2007–2011 is reflected in some of the change-points detected by the SBS-MVTS algorithm as shown in Figure 4.

To further check the validity of the detected change-points, we tested the stationarity of the series within the segments examined at each iteration of the SBS-MVTS algorithm. The problem of testing stationarity for multivariate time series has not been widely studied; Jentsch and Subba Rao (2013) note that only few procedures exist for such a purpose and those existing ones are not easily applicable to the current dataset with dimensionality as large as  $p = 456$ .

Instead, we chose to examine the stationarity of first few principal component series obtained over each segment. Various methods have been proposed for testing second-order stationarity of univariate time series and among them, the multiple testing procedure proposed in Nason (2013) is available in the format of an R package. However, since its test statistics are close to ours except that they are computed at the locations which are power of two, we concluded that performing this procedure would not be suitable for our purpose.

Alternatively, we adopted the stationarity test proposed in Dwivedi and Subba Rao (2011) (R code is available on <http://www.stat.tamu.edu/~suhasini/Rcode.html>), which tests whether the correlations between the discrete Fourier transforms of the series are close to zero. We applied the testing procedure to each segment examined as the SBS-MVTS algorithm proceeded. That is, since change-points were detected in the order 550,  $\{426, 1148\}$ ,  $\{199, 1017\}$ ,  $\{126, 274, 711, 1088\}$ ,  $\{66, 864\}$  (those detected at the same “level” were grouped together), we investigated the segments  $[1, 1260]$ ,  $[1, 549]$ ,  $[550, 1260]$ ,  $[1, 425]$ ,  $[426, 549]$  and so forth. Within each segment  $[s, e]$ , principal component analysis was performed on  $\mathbf{X}_t$ , producing two factor series as the first two principal components. As these factors often exhibited high autocorrelations (which might falsely lead to rejecting the null hypothesis), we fit an AR(1) process to each factor and tested the stationarity of these residual series.

Furthermore, we checked whether the resulting residuals behaved like Gaussian white noise. It may be expected that if  $\mathbf{X}_t$  is stationary within  $t \in [s, e]$ , the residuals behave like Gaussian white

Table 5: Summary of the change-points detected from the component processes of S&P 500; refer to the TED spread in Figure 4 for the change-points marked by †.

t	date	historical event
66	2007/04/09	
126	2007/07/03	TED spread†
199	2007/10/16	US stock market peaked in October 2007.
274	2008/02/04	
426	2008/09/10	TED spread†
550	2009/03/10	The Dow Jones average index reached a trough of around 6600 by March 2009; identified by the New York Times as the “nadir of the crisis”.
711	2009/10/27	
864	2010/06/08	TED spread†
1017	2011/01/13	
1088	2011/04/27	
1148	2011/07/22	Global stock markets fell due to fears of contagion of the European sovereign debt crisis.

noise under our LSW model, whereas if its second-order structure undergoes a change, departure from Gaussianity is observable from the distribution of the residuals. To do so, we adopted the normality tests which were implemented on R (packages `tseries` and `nortest`), namely Lilliefors, Anderson-Darling, Pearson, Shapiro-Francia and Jarque-Bera tests. While failing to reject the null hypothesis via these tests do not guarantee that the residual series follows a normal distribution, they can serve as an indicator that certain moments and quantiles of the residuals behave like those of Gaussian random variables.

Adopting the Bonferroni correction as in Nason (2013), we rejected the null hypothesis of stationarity or normality when the corresponding p-value was smaller than  $\alpha^* = 0.05/23 = 0.00212$  (dependence in the test statistics was not taken into account). For most of the segments containing any change-points, the p-values were smaller than  $\alpha^*$  for at least one of the factors, except for [119, 425] (for normality tests) and [1017, 1147] (for both tests). On the other hand, p-values were generally greater than  $\alpha^*$  over the segments which did not contain any change-point, indicating that the residuals over these segments behaved similarly as Gaussian white noise. Some segments, such as [1, 65], both of the null hypotheses were rejected which implies that further change-points could have been detected but the restriction imposed on change-point dispersion in the SBS algorithm prevented them from being detected.

Overall, the findings support the use of the SBS-MVTS methodology in this case study.

### Acknowledgements

We would like to thank the Editor, Associate Editor and two Referees for very helpful comments which led to a substantial improvement of this manuscript.

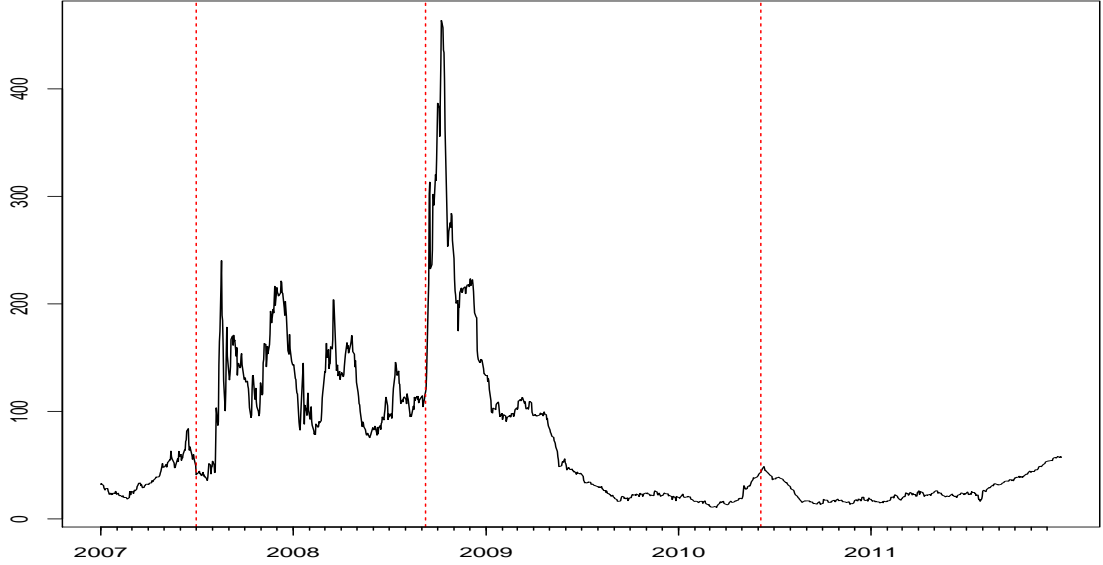


Figure 4: TED spread between 2007 and 2011 with the estimated change-points (vertical lines) marked by † in Table 5.

## A Proof of Theorem 1

We first prove a set of lemmas that are essential in proving Theorem 1 for a single multiplicative sequence following model (1). Note that when  $d = 1$ , the algorithm returns identical change-points no matter if  $\tilde{y}_t^{\text{thr}}$  or the raw CUSUM statistic  $\mathcal{Y}_{s,t,e}^{(1)}$  are used. In this section, the superscripts are suppressed where there is no confusion. Define  $\mathbb{Y}_{s,b,e}$  as

$$\mathbb{Y}_{s,b,e} = \left| \sqrt{\frac{e-b}{n \cdot (b-s+1)}} \sum_{t=s}^b Y_{t,T} - \sqrt{\frac{b-s+1}{n \cdot (e-b)}} \sum_{t=b+1}^e Y_{t,T} \right|.$$

for  $n = e - s + 1$ , and  $\mathbb{S}_{s,b,e}$  is defined similarly with  $\sigma(t/T)$  replacing  $Y_{t,T}$ . Further, let  $\eta_1 < \eta_2 < \dots < \eta_N$  be the change-points in  $\sigma(t/T)$  (with the convention of  $\eta_0 = 0$  and  $\eta_{N+1} = T - 1$ ). In what follows,  $c_i$ ,  $i = 1, 2, \dots$  are used to denote specific positive constants and  $C, C'$  to denote generic ones.

Let  $s$  and  $e$  denote the “start” and the “end” of a segment to be examined at some stage of the algorithm. Further, we assume that  $s$  and  $e$  satisfy

$$\eta_{q_1} \leq s < \eta_{q_1+1} < \dots < \eta_{q_2} < e \leq \eta_{q_2+1}$$

for  $0 \leq q_1 < q_2 \leq N$ . In Lemmas 1–5, we impose at least one of following conditions:

$$s < \eta_{q_1+q} - c_1 \delta_T < \eta_{q_1+q} + c_1 \delta_T < e \text{ for some } 1 \leq q \leq q_2 - q_1, \quad (15)$$

$$\{(\eta_{q_1+1} - s) \wedge (s - \eta_{q_1})\} \vee \{(\eta_{q_2+1} - e) \wedge (e - \eta_{q_2})\} \leq c_2 \epsilon T, \quad (16)$$



where  $\wedge$  and  $\vee$  are the minimum and maximum operators. We later show that under (A1)–(A4), both conditions (15) and (16) hold throughout the algorithm for all those segments which contain change-points still to be detected. Finally, throughout the following proofs,  $\delta_T$  and  $\epsilon_T$  are as assumed in Theorem 1 along with the threshold  $\pi_T$  and other quantities involved in their definitions, i.e.  $\theta, \vartheta, \kappa, \gamma$  and  $\omega$ .

**Lemma 1.** Let  $s$  and  $e$  satisfy (15). Then there exists  $1 \leq q^* \leq q_2 - q_1$  such that

$$\left| \mathbb{S}_{s, \eta_{q_1+q^*}, e} \right| \geq c_3 \frac{\delta_T}{\sqrt{T}}. \quad (17)$$

**Proof.** When there exists a single change-point in  $\sigma(z)$  over  $(s, e)$ , we have  $q^* = 1$  and thus use the constancy of  $\sigma(z)$  to the left and the right of  $\eta_{q_1+q^*}$  to show that

$$\left| \mathbb{S}_{s, \eta_{q_1+q^*}, e} \right| = \sqrt{\frac{(\eta_{q_1+q^*} - s + 1)(e - \eta_{q_1+q^*})}{n}} \left| \sigma\left(\frac{\eta_{q_1+q^*} + 1}{T}\right) - \sigma\left(\frac{\eta_{q_1+q^*}}{T}\right) \right|,$$

which is bounded from below by  $\sigma_* c_1 \delta_T / \sqrt{T}$  from (A1) and (A3). In the case of multiple change-points, we remark that for any  $q$  satisfying (15), there exists at least one  $q^*$  for which

$$\left| \frac{1}{\eta_{q_1+q^*} - s + 1} \sum_{t=s}^{\eta_{q_1+q^*}} \sigma\left(\frac{t}{T}\right) - \frac{1}{e - \eta_{q_1+q^*}} \sum_{t=\eta_{q_1+q^*}+1}^e \sigma\left(\frac{t}{T}\right) \right| \quad (18)$$

is bounded away from zero under (A3). Therefore, the same arguments apply as in the case of a single change-point and (17) follows.  $\square$

**Lemma 2.** Suppose (15) holds. Then there exists  $c_0 \in (0, \infty)$  such that for  $b$  satisfying  $|\eta_{q_1+q} - b| \geq c_0 \epsilon_T$  and  $\mathbb{S}_{s, b, e} < \mathbb{S}_{s, \eta_{q_1+q}, e}$  for some  $q$ , we have  $\mathbb{S}_{s, \eta_{q_1+q}, e} \geq \mathbb{S}_{s, b, e} + C \epsilon_T / \sqrt{T}$ .

**Proof.** Without loss of generality, let  $\eta \equiv \eta_{q_1+q} < b$ . Then we have

$$\mathbb{S}_{s, b, e} = \frac{\sqrt{\eta - s + 1} \sqrt{e - b}}{\sqrt{e - \eta} \sqrt{b - s + 1}} \mathbb{S}_{s, \eta, e},$$

and therefore using the Taylor expansion and Lemma 1,

$$\begin{aligned} \mathbb{S}_{s, \eta, e} - \mathbb{S}_{s, b, e} &= \left( 1 - \frac{\sqrt{\eta - s + 1} \sqrt{e - b}}{\sqrt{e - \eta} \sqrt{b - s + 1}} \right) \cdot \mathbb{S}_{s, \eta, e} = \frac{\sqrt{1 + \frac{b - \eta}{\eta - s + 1}} - \sqrt{1 - \frac{b - \eta}{e - \eta}}}{\sqrt{1 + \frac{b - \eta}{\eta - s + 1}}} \cdot \mathbb{S}_{s, \eta, e} \\ &\geq \frac{\left( 1 + \frac{c_0 \epsilon_T}{2c_1 \delta_T} \right) - \left( 1 - \frac{c_0 \epsilon_T}{2c_1 \delta_T} \right) + o\left(\frac{c_0 \epsilon_T}{n}\right)}{\sqrt{2}} \cdot \mathbb{S}_{s, \eta, e} \geq \frac{c_0 \epsilon_T}{c_1 \sqrt{2} \delta_T} \cdot c_3 \frac{\delta_T}{\sqrt{T}} = C \frac{\epsilon_T}{\sqrt{T}}. \quad \square \end{aligned}$$

**Lemma 3.** Define

$$\mathcal{D} = \left\{ 1 \leq s < b < e \leq T; n \equiv e - s + 1 \geq \delta_T \text{ and } \max \left( \frac{b - s + 1}{n}, \frac{e - b}{n} \right) \leq c_* \right\}$$

for the same  $c_*$  as that used in (2). Then as  $T \rightarrow \infty$ ,

$$\mathbb{P} \left( \max_{(s,b,e) \in \mathcal{D}} |\mathbb{Y}_{s,b,e} - \mathbb{S}_{s,b,e}| > \log T \right) \rightarrow 0. \quad (19)$$

**Proof.** We first study the probability of the following event

$$\frac{1}{\sqrt{n}} \left| \sum_{t=s}^e c_t \cdot \sigma(t/T) (Z_{t,T}^2 - 1) \right| > \log T, \quad (20)$$

where  $c_t = \sqrt{(e-b)/(b-s+1)}$  for  $s \leq t \leq b$  and  $c_t = -\sqrt{(b-s+1)/(e-b)}$  for  $b+1 \leq t \leq e$ . Note that from the definition of  $\mathcal{D}$ , we have  $|c_t| \leq c_* \equiv \sqrt{\frac{c_*}{1-c_*}} < \infty$ . Let  $\{U_i\}_{i=1}^n$  denote i.i.d. standard normal variables,  $\mathbf{V} = (v_{i,j})_{i,j=1}^n$  with  $v_{i,j} = \text{cor}(Z_{i,T}, Z_{j,T})$ , and  $\mathbf{W} = (w_{i,j})_{i,j=1}^n$  be a diagonal matrix with  $w_{i,i} = c_t \cdot \sigma(t/T)$  where  $t = i + s - 1$ . By standard results (see e.g. Johnson and Kotz (1970), page 151), the probability of the event (20) equals  $\mathbb{P}(n^{-1/2} |\sum_{i=1}^n \lambda_i (U_i^2 - 1)| > \log T)$ , where  $\lambda_i$  are eigenvalues of the matrix  $\mathbf{V}\mathbf{W}$ . Due to the Gaussianity of  $U_i$ , it follows that  $\lambda_i (U_i^2 - 1)$  satisfy the Cramér's condition, i.e., there exists a constant  $C > 0$  such that

$$\mathbb{E} |\lambda_i (U_i^2 - 1)|^k \leq C^{k-2} k! \cdot \mathbb{E} |\lambda_i (U_i^2 - 1)|^2, \quad k = 3, 4, \dots$$

Therefore we can apply the Bernstein inequality (Bosq 1998) and obtain

$$\mathbb{P} \left( \left| \sum_{t=s}^e c_t \cdot \sigma(t/T) (Z_{t,T}^2 - 1) \right| > \sqrt{n} \log T \right) \leq 2 \exp \left( - \frac{n \log^2 T}{4 \sum_{i=1}^n \lambda_i^2 + 2 \max_i |\lambda_i| C \sqrt{n} \log T} \right).$$

It holds that  $\sum_{i=1}^n \lambda_i^2 = \text{tr}(\mathbf{V}\mathbf{W})^2 \leq c_*^2 \max_z \sigma^2(z) n \phi_\infty^2$ . We also note that  $\max_i |\lambda_i| \leq c_* \max_z \sigma(z) \|\mathbf{V}\|_2$ , where  $\|\cdot\|_2$  denotes the spectral norm of a matrix, and that  $\|\mathbf{V}\|_2 \leq \phi_\infty^1$ . Then, the probability in (19) is bounded from above by

$$\sum_{(s,b,e) \in \mathcal{D}} 2 \exp \left( - \frac{n \log^2 T}{4 c_*^2 \max_z \sigma^2(z) n \phi_\infty^2 + 2 c_* \max_z \sigma(z) \sqrt{n} \log T \phi_\infty^1} \right) \leq 2T^3 \exp(-C' \log^2 T)$$

which converges to 0, since  $\phi_\infty^1 < \infty$  from (A2),  $n \geq \delta_T > \log T$  and  $c_* < \infty$ .  $\square$

**Lemma 4.** Under (15) and (16), define an interval  $\mathcal{D}_{s,e} = \{t \in (s, e); \max\{(t-s+1)/n, (e-t)/n\} \leq c_*\} \subset [s, e]$ . Then there exists  $1 \leq q^* \leq q_2 - q_1$  such that  $\eta_{q_1+q^*} \in \mathcal{D}_{s,e}$  and  $|\hat{\eta} - \eta_{q_1+q^*}| < c_0 \epsilon_T$  for  $\hat{\eta} = \arg \max_{t \in \mathcal{D}_{s,e}} |\mathbb{Y}_{s,t,e}|$ .

**Proof.** The following proof is an adaptation of the proof of Theorem 3.1 in Fryzlewicz (2013) to non-Gaussian and non-i.i.d. noise.

We note that the model (1) can be re-written as

$$Y_{t,T} = \sigma(t/T) + \sigma(t/T)(Z_{t,T}^2 - 1), \quad t = 0, \dots, T-1,$$

which in turn can be regarded as a generic additive model  $y_t = f_t + \varepsilon_t$  with a piecewise-constant signal  $f_t$  by setting  $y_t = Y_{t,T}$ ,  $f_t = \sigma(t/T)$  and  $\varepsilon_t = \sigma(t/T)(Z_{t,T}^2 - 1)$ .

On a given segment  $[s, e]$ , detecting a change-point is equivalent to fitting the best step function (i.e. a piecewise constant function with one change-point)  $\hat{f}_t$  which minimizes  $\sum_{t=s}^e (y_t - g_t)^2$  among all step functions  $g_t$  defined on  $[s, e]$ . Let  $f_t^0$  denote the best step function approximation to  $f_t$  with its change-point located within  $\mathcal{D}_{s,e}$ , i.e. any  $g_t$  which has its change-point in  $\mathcal{D}_{s,e}$  and minimizes  $\sum_{t=s}^e (f_t - g_t)^2$  ( $f_t^0$  may or may not be unique). Under (A1) and (15)–(16), Lemmas 2.2–2.3 in Venkatraman (1992) imply that the single change-point in  $f_t^0$  coincides with one of any undetected change-points of  $f_t$  in  $\mathcal{D}_{s,e}$ , and we denote such a change-point by  $\eta$ .

Let us assume that  $\hat{f}_t$  has a change-point at  $t = \hat{\eta}$  and it satisfies  $|\hat{\eta} - \eta| = c_0 \epsilon_T$ . Then if we show

$$\sum_{t=s}^e (y_t - f_t^0)^2 - \sum_{t=s}^e (y_t - \hat{f}_t)^2 < 0, \quad (21)$$

it would prove that  $\hat{\eta}$  must be within the distance less than  $c_0 \epsilon_T$  from  $\eta$ . Expanding the left-hand side of (21), we obtain

$$\sum_{t=s}^e (\varepsilon_t + f_t - f_t^0)^2 - \sum_{t=s}^e (\varepsilon_t + f_t - \hat{f}_t)^2 = 2 \sum_{t=s}^e \varepsilon_t (\hat{f}_t - f_t^0) + \sum_{t=s}^e \{(f_t - f_t^0)^2 - (f_t - \hat{f}_t)^2\} \equiv I + II.$$

From the definition of  $f_t^0$ , it is clear that  $II < 0$ . Let  $\mathcal{F}$  be the set of vectors that are initially constant and positive, then contain a change-point, following which are constant and negative; moreover, they sum to zero and to one when squared. Let  $\bar{f}$  be the mean of  $f_t$  on  $t \in [s, e]$ , and the vector  $\psi^0 \in \mathcal{F}$  satisfy  $f_t^0 = \bar{f} + \langle f, \psi^0 \rangle \psi^0$ . Then we have

$$\begin{aligned} \sum_{t=s}^e (f_t - f_t^0)^2 &= \sum_{t=s}^e (f_t - \bar{f})^2 - 2 \langle f, \psi^0 \rangle \sum_{t=s}^e (f_t - \bar{f}) \psi^0 + \langle f, \psi^0 \rangle^2 \sum_{t=s}^e (\psi^0)^2 \\ &= \sum_{t=s}^e (f_t - \bar{f})^2 - \langle f, \psi^0 \rangle^2. \end{aligned} \quad (22)$$

Let a step function  $\tilde{f}_t$  be chosen so as to minimize  $\sum_{t=s}^e (f_t - g_t)^2$  under the constraint that  $g_t$  shares the same change-point as  $\hat{f}_t$ . Then we have

$$\sum_{t=s}^e (f_t - \tilde{f}_t)^2 \leq \sum_{t=s}^e (f_t - \hat{f}_t)^2 \quad (23)$$

Representing  $\tilde{f}_t = \bar{f} + \langle f, \tilde{\psi} \rangle \tilde{\psi}$  for another vector  $\tilde{\psi} \in \mathcal{F}$  and using (22) and (23),

$$\begin{aligned} & \sum_{t=s}^e \{(f_t - f_t^0)^2 - (f_t - \hat{f}_t)^2\} \leq \sum_{t=s}^e \{(f_t - f_t^0)^2 - (f_t - \tilde{f}_t)^2\} = \langle f, \tilde{\psi} \rangle^2 - \langle f, \psi^0 \rangle^2 \\ & = (|\langle f, \tilde{\psi} \rangle| - |\langle f, \psi^0 \rangle|)(|\langle f, \tilde{\psi} \rangle| + |\langle f, \psi^0 \rangle|) \leq (|\langle f, \tilde{\psi} \rangle| - |\langle f, \psi^0 \rangle|)|\langle f, \psi^0 \rangle|. \end{aligned}$$

Since  $|\langle f, \psi^0 \rangle| = \mathbb{S}_{s, \eta, e}$  and  $|\langle f, \tilde{\psi} \rangle| = \mathbb{S}_{s, \hat{\eta}, e}$  with the distance between  $\eta$  and  $\hat{\eta}$  being at least  $c_0 \epsilon_T$ , the above is bounded from above by  $-C \delta_T / \sqrt{T} \cdot \epsilon_T / \sqrt{T} = -C \epsilon_T \delta_T / T$  from Lemmas 1-2.

Turning to  $I$ , we can decompose the term as

$$\sum_{t=s}^e \varepsilon_t(\hat{f}_t - f_t^0) = \sum_{t=s}^e \varepsilon_t(\hat{f}_t - \tilde{f}_t) + \sum_{t=s}^e \varepsilon_t(\tilde{f}_t - f_t^0),$$

and each of the two sums are split into sub-sums computed over the intervals of constancy of  $\hat{f}_t - \tilde{f}_t$  and  $\tilde{f}_t - f_t^0$ , respectively. Assume  $\hat{\eta} \geq \eta$  without loss of generality, we have

$$\sum_{t=s}^e \varepsilon_t(\tilde{f}_t - f_t^0) = \left( \sum_{t=s}^{\eta} + \sum_{t=\eta+1}^{\hat{\eta}} + \sum_{t=\hat{\eta}+1}^e \right) \varepsilon_t(\tilde{f}_t - f_t^0) \equiv III + IV + V.$$

As  $T \rightarrow \infty$ , we have with probability tending to 1 (Lemma 3)

$$\begin{aligned} |III| &= \left| \frac{1}{\sqrt{\eta - s + 1}} \sum_{t=s}^{\eta} \varepsilon_t \right| \cdot \sqrt{\eta - s + 1} \cdot \left| \frac{1}{\hat{\eta} - s + 1} \sum_{t=s}^{\hat{\eta}} f_i - \frac{1}{\eta - s + 1} \sum_{t=s}^{\eta} f_i \right| \\ &\leq C \log T \sqrt{\eta - s + 1} \cdot \frac{c_0 \epsilon_T}{\hat{\eta} - s + 1} \leq C' \epsilon_T \delta_T^{-1/2} \log T. \end{aligned}$$

$|V|$  is of the same order as  $|III|$  and similarly  $|IV|$  is bounded by  $C \epsilon_T^{1/2} \log T$ .

As for  $\sum_{t=s}^e \varepsilon_t(\hat{f}_t - \tilde{f}_t)$ , we have

$$\sum_{t=s}^e \varepsilon_t(\hat{f}_t - \tilde{f}_t) = \left( \sum_{t=s}^{\hat{\eta}} + \sum_{t=\hat{\eta}+1}^e \right) \varepsilon_t(\hat{f}_t - \tilde{f}_t) \equiv VI + VII.$$

Note that  $VI$  and  $VII$  are of the same order, and with probability converging to 1 as  $T \rightarrow \infty$ ,

$$|VI| = \frac{1}{\hat{\eta} - s + 1} \left( \sum_{t=s}^{\hat{\eta}} \varepsilon_t \right)^2 = \log^2 T.$$

Putting together all the above requirements, as long as

$$\frac{\epsilon_T \delta_T}{T} > (\epsilon_T \delta_T^{-1/2} \log T) \vee (\epsilon_T^{1/2} \log T) \vee (\log^2 T), \quad (24)$$

the dominance of the term  $II$  over  $I$  holds and thus we prove the lemma.

From (24), it is derived that  $\Theta > 2/3$  and  $\epsilon_T > \delta_T^{-2} \cdot T^2 \log^2 T$ , i.e. letting  $\epsilon_T = \max(T^\theta, \log^{2+\vartheta} T)$ , it is sufficient to have  $\theta \geq 2 - 2\Theta$  and  $\vartheta > 0$ . Also the proof of Lemmas 5–6 require  $\delta_T^{-1} T \log T \ll \sqrt{\epsilon_T} \ll \pi_T \ll \delta_T (T \log T)^{-1/2}$ , which is satisfied by  $\theta = 2 - 2\Theta$  and  $\pi_T = \kappa T^\gamma$  with any  $\gamma \in (1 - \Theta, \Theta - 1/2)$  when  $\Theta \in (3/4, 1)$ , and by  $\pi_T = \kappa \log^{1+\omega} T$  with any  $\omega > \vartheta/2$  when  $\Theta = 1$ .  $\square$

**Lemma 5.** Under (15) and (16), we have

$$\mathbb{P} \left( |\mathbb{Y}_{s,b,e}| < \pi_T \cdot n^{-1} \sum_{t=s}^e Y_{t,T} \right) \rightarrow 0 \quad (25)$$

for  $b = \arg \max_{t \in \mathcal{D}_{s,e}} |\mathbb{Y}_{s,t,e}|$ , as  $T \rightarrow \infty$ .

**Proof.** Define the two events  $\mathcal{A}$  and  $\mathcal{B}$  as

$$\mathcal{A} = \left\{ |\mathbb{Y}_{s,b,e}| < \pi_T \cdot \frac{1}{n} \sum_{t=s}^e Y_{t,T} \right\} \quad \text{and} \quad \mathcal{B} = \left\{ \frac{1}{n} \left| \sum_{t=s}^e Y_{t,T} - \sum_{t=s}^e \sigma(t/T) \right| < \bar{\sigma} \equiv \frac{1}{2n} \sum_{t=s}^e \sigma(t/T) \right\}.$$

We can show that  $\mathbb{P}(\mathcal{B}) \rightarrow 1$  as  $T \rightarrow \infty$  using the Bernstein inequality as in the proof of Lemma 3 and that the convergence rate is faster than that of (19). Hence  $\mathbb{P}(n^{-1} \sum_{t=s}^e Y_{t,T} \in (\bar{\sigma}/2, 3\bar{\sigma}/2)) \rightarrow 1$ . Since the probability in (25) is bounded from above by  $\mathbb{P}(\mathcal{A} \cap \mathcal{B}) + \mathbb{P}(\mathcal{B}^c)$ , we only need to show that  $\mathbb{P}(\mathcal{A} \cap \mathcal{B}) \rightarrow 0$ . From Lemma 4, we have some  $\eta \equiv \eta_{q_1+q}$  satisfying  $|b - \eta| < c_0 \epsilon_T$ . Without loss of generality, let  $\eta < b$  and define  $\sigma_1 \equiv \sigma(\frac{\eta}{T}) \neq \sigma(\frac{\eta+1}{T}) \equiv \sigma_2$ . From Lemma 3, (15)–(16) and (A1), the following holds with probability tending to 1 as  $\gamma < \Theta - 1/2$ :

$$\begin{aligned} |\mathbb{Y}_{s,b,e}| &\geq |\mathbb{S}_{s,b,e}| - \log T \\ &= \sqrt{\frac{(b-s+1)(e-b)}{n}} \left| \frac{\sigma_1(\eta-s+1) + \sigma_2(b-\eta)}{b-s+1} - \sigma_2 \right| - \log T \\ &\geq \sqrt{\frac{e-b}{n(b-s+1)}} \cdot \sigma_*(\eta-s+1) - \log T \geq \sqrt{\frac{1-c_*}{nc_*}} \cdot \sigma_*(\eta-s+1) - \log T \\ &\geq \frac{C\delta_T}{c^*\sqrt{T}} - \log T > \pi_T \cdot \frac{3\bar{\sigma}}{2}. \end{aligned}$$

$\square$

**Lemma 6.** For some positive constants  $C, C'$ , let  $s, e$  satisfy either

- (i)  $\exists 1 \leq q \leq N$  such that  $s \leq \eta_q \leq e$  and  $(\eta_q - s + 1) \wedge (e - \eta_q) \leq C\epsilon_T$  or
- (ii)  $\exists 1 \leq q \leq N$  such that  $s \leq \eta_q < \eta_{q+1} \leq e$  and  $(\eta_q - s + 1) \vee (e - \eta_{q+1}) \leq C'\epsilon_T$ .

Then as  $T \rightarrow \infty$ ,

$$\mathbb{P} \left( |\mathbb{Y}_{s,b,e}| > \pi_T \cdot n^{-1} \sum_{t=s}^e Y_{t,T} \right) \rightarrow 0 \quad (26)$$

for  $b = \arg \max_{t \in \mathcal{D}_{s,e}} |\mathbb{Y}_{s,t,e}|$ .

**Proof.** First we assume (i). We define the event  $\mathcal{A}'$  as  $\mathcal{A}' = \{|\mathbb{Y}_{s,b,e}| > \pi_T \cdot n^{-1} \sum_{t=s}^e Y_{t,T}\}$  and adopt the event  $\mathcal{B}$  from the proof of Lemma 5. Since  $\mathbb{P}(\mathcal{B}) \rightarrow 1$ , the probability in (26) is bounded from above by  $\mathbb{P}(\mathcal{A}' \cap \mathcal{B}) + \mathbb{P}(\mathcal{B}^c)$  and it only remains to show  $\mathbb{P}(\mathcal{A}' \cap \mathcal{B}) \rightarrow 0$ . Assuming  $\eta_q - s + 1 \leq C\epsilon_T$  leads to  $b > \eta_q \equiv \eta$ , and using the same notation as in Lemma 5 we have

$$\begin{aligned} |\mathbb{Y}_{s,b,e}| &\leq |\mathbb{S}_{s,b,e}| + \log T \\ &\leq \sqrt{\frac{(b-s+1)(e-b)}{n}} \left| \frac{\sigma_1(\eta-s+1) + \sigma_2(b-\eta)}{b-s+1} - \sigma_2 \right| + \log T \\ &\leq \sqrt{\frac{e-b}{n(b-s+1)}} \cdot 2\sigma^*(\eta-s+1) + \log T \leq \sqrt{\frac{e-\eta}{n(\eta-s+1)}} \cdot 2\sigma^*(\eta-s+1) + \log T \\ &\leq 2\sigma^* \sqrt{C\epsilon_T} + \log T < \pi_T \cdot \frac{\bar{\sigma}}{2}. \end{aligned}$$

The proof in the case of (ii) takes similar arguments and thus Lemma 6 follows.  $\square$

When applying the algorithm to a single sequence with  $N$  change-points, Lemmas 1–6 shows the consistency of the algorithm as follows. At the start of the binary segmentation algorithm, we have  $s = 0$  and  $e = T - 1$ , and thus all the conditions required by Lemma 5 are met. Then the algorithm detects and locates a change-point which is within the distance of  $c_0\epsilon_T$  from a true change-point (Lemma 4) such that any segments defined by the detected change-points also satisfy the conditions in Lemma 5, from the assumptions on the spread of  $\eta_q$ ,  $q = 1, \dots, N$  in (A1). The algorithm iteratively proceeds in this manner until all the  $N$  change-points are detected, and since thus-determined segments meet either of the two conditions in Lemma 6, change-point detection is completed.

Now we turn our attention to the case of  $d > 1$  sequences and prove Theorem 1. When necessary to highlight the dependence of  $Y_{t,T}^{(k)}$  on  $k$  in deriving  $\mathbb{S}_{s,t,e}$  and  $\mathbb{Y}_{s,t,e}$ , we use the notations  $\mathbb{S}_{s,t,e}^{(k)}$  and  $\mathbb{Y}_{s,t,e}^{(k)}$ . The index set  $\{1, \dots, d\}$  is denoted by  $\mathcal{K}$ . From Lemma 3, we have  $\max_k \max_{(s,t,e) \in \mathcal{D}} |\mathbb{Y}_{s,t,e}^{(k)} - \mathbb{S}_{s,t,e}^{(k)}| \leq \log T$  with the probability bounded from below by  $1 - CdT^3 \exp(-C' \log^2 T) \rightarrow 1$  under (A4). Therefore, the following arguments are made conditional on this event.

Let  $\mathcal{K}_{s,e} \subset \mathcal{K}$  denote the index set corresponding to those  $Y_{t,T}^{(k)}$  with at least one change-points in  $\sigma^{(k)}(t/T)$  on  $t \in (s, e)$ . Lemma 6 shows that  $\mathcal{Y}_{s,t,e}^{(k)}$ ,  $k \in \mathcal{K} \setminus \mathcal{K}_{s,e}$  do not pass the thresholding at any  $t \in (s, e)$ , i.e.  $\mathcal{I}_{s,t,e}^{(k)} = \mathbb{I}(\mathcal{Y}_{s,t,e}^{(k)} > \pi_T) = 0$  for all  $t \in (s, e)$ . On the other hand, Lemma 5 indicates that all  $\mathcal{Y}_{s,t,e}^{(k)}$ ,  $k \in \mathcal{K}_{s,e}$  survive after thresholding in the sense that  $\mathcal{I}_{s,t,e}^{(k)} = 1$  over the intervals around the true change-points. Besides, in Venkatraman (1992), each  $\mathbb{S}_{s,t,e}^{(k)}$  is shown to be of the functional form  $g^{(k)}(x) = (x(1-x))^{-1/2}(\alpha_x^{(k)}x + \beta_x^{(k)})$  for  $x = (t-s+1)/n \in (0, 1)$ , where  $\alpha_x^{(k)}$  and  $\beta_x^{(k)}$  are determined by the magnitude of the jumps at the change-points of  $\sigma^{(k)}(t/T)$  as well as their locations, and constant between any two adjacent change-points. Note that scaling of  $\mathbb{S}_{s,t,e}^{(k)}$  by  $n^{-1} \sum_{t=s}^e Y_{t,T}^{(k)}$  scales the values of  $\alpha_x$  and  $\beta_x$  only, and does not change the shape of  $g^{(k)}(x)$ . Each function  $g^{(k)}(x)$

(a) is either monotonic or decreasing and then increasing on any interval defined by two adjacent

change-points of  $\sigma^{(k)}(t/T)$ , and

(b) achieves the maximum at one of the change-points of  $\sigma^{(k)}(t/T)$  in  $(s, e)$ ,

see Lemma 2.2 of Venkatraman (1992). Since the point-wise summation of  $g^{(k)}(\cdot)$  over  $k \in \mathcal{K}_{s,e}$  takes the functional form  $g(x) = (x(1-x))^{-1/2}(\alpha_x x + \beta_x)$  which is identical to that of each individual  $g^{(k)}(\cdot)$ , it satisfies the above (a)–(b) as well.

Denoting  $\bar{Y}_{s,e} = \frac{1}{n} \sum_{u=s}^e Y_{u,T}^{(k)}$ , we decompose  $\tilde{y}_t^{\text{thr}}$  as

$$\begin{aligned} \frac{\tilde{y}_t^{\text{thr}}}{\sum_{k \in \mathcal{K}} \mathcal{I}_{s,t,e}^{(k)}} &= \frac{\sum_{k \in \mathcal{K}} \bar{Y}_{s,e}^{-1} \cdot \mathbb{Y}_{s,t,e}^{(k)} \cdot \mathcal{I}_{s,t,e}^{(k)}}{\sum_{k \in \mathcal{K}} \mathcal{I}_{s,t,e}^{(k)}} \\ &= \frac{\sum_{k \in \mathcal{K}_{s,e}} \bar{Y}_{s,e}^{-1} \cdot \mathbb{S}_{s,t,e}^{(k)} \cdot \mathcal{I}_{s,t,e}^{(k)}}{|\mathcal{K}_{s,e}|} + \frac{\sum_{k \in \mathcal{K}_{s,e}} \bar{Y}_{s,e}^{-1} \left( \mathbb{Y}_{s,t,e}^{(k)} - \mathbb{S}_{s,t,e}^{(k)} \right) \cdot \mathcal{I}_{s,t,e}^{(k)}}{|\mathcal{K}_{s,e}|} = I + II \end{aligned}$$

where  $II \leq C \log T$  (Lemma 3). Note that we can construct an additive model  $y_t = f_t + \varepsilon_t$  over  $t \in [s, e]$  as the one introduced in Lemma 4, such that the CUSUM statistic of the piecewise constant signal  $f_t$  (i.e.  $\mathbb{S}_{s,t,e}$  with  $f_t$  replacing  $\sigma(t/T)$ ) is equal to  $|\mathcal{K}_{s,e}|^{-1} \sum_{k \in \mathcal{K}_{s,e}} \bar{Y}_{s,e}^{-1} \cdot \mathbb{S}_{s,t,e}^{(k)}$ . Since thresholding does not have any impact on the peak formed around the change-points within the distance of  $C\epsilon_T$ ,  $I$  is of the same functional form as the CUSUM statistic of  $f_t$  in that region around the change-points. Therefore from Lemma 4,  $b = \arg \max_{t \in (s,e)} \tilde{y}_t^{\text{thr}}$  satisfies  $|b - \eta_q| < c_0 \epsilon_T$  for some  $q = 1, \dots, N$ .

The SBS algorithm continues the change-point detection procedure on the segments defined by previously detected change-points, which satisfy both (15) and (16) for at least one of  $k \in \mathcal{K}$  until every change-point is detected (as in the case of  $d = 1$ ). Once all  $\eta_1, \dots, \eta_N$  are identified, each of the resulting segments satisfies either (i) or (ii) in Lemma 6 for all  $k \in \mathcal{K}$  such that the termination condition of the SBS algorithm (Step 2.1) is met.

Note that for any  $k \in \mathcal{K}_{s,e}$ , a simple modification of the proof of Lemma 2 leads to the existence of a positive constant  $C$  satisfying  $\mathbb{S}_{s,t,e}^{(k)} > \pi_T$  for  $|t - \eta| \leq C\epsilon_T$ , where  $\eta$  is any of the change-points of  $Y_{t,T}^{(k)}$  within  $(s, e)$  at which (18) is not equal to zero. Then, the corresponding  $\mathbb{Y}_{s,t,e}^{(k)}$  is also greater than  $\pi_T$  within the distance of  $\Delta_T \asymp \epsilon_T$  from  $b = \arg \max_{t \in [s,e]} \mathcal{Y}_{s,t,e}^{(k)}$ , and hence the condition on the change-point estimates in Step 2.3 is justified with the choice of  $\Delta_T = \lfloor \sqrt{T}/2 \rfloor$ .

## B Multivariate LSW time series

The LSW model enables a time-scale decomposition of a multivariate, possibly high-dimensional process and thus permits a rigorous estimation of its second-order structure as shown in this section. The following conditions are imposed on the piecewise constant functions  $W_i^{(j)}(z)$  and  $\Sigma_i^{(j,l)}(k/T)$ , as well as on the change-points in the second-order structure for the  $p$ -variate LSW time series defined in Definition 1.

(B1) The following holds for each of the piecewise constant functions  $W_i^{(j)}(z)$  and  $\Sigma_i^{(j,l)}(z)$  for

$j, l = 1, \dots, p; i = -1, -2, \dots$

- Denoting by  $L_i^{(j)}$  the total magnitude of jumps in  $\{W_i^{(j)}(z)\}^2$ , the variability of the functions  $W_i^{(j)}(z)$ ,  $i = -1, -2, \dots$  is controlled such that  $\sum_{i=-I_T}^{-1} 2^{-i} L_i^{(j)} = O(\log T)$  uniformly in  $j$  where  $I_T = \lfloor \log T \rfloor$ . Also, there exists a positive constant  $C > 0$  such that  $|W_i^{(j)}(z)| \leq C2^{i/2}$  uniformly over all  $i \leq -1$  and  $j = 1, \dots, p$ .
- Denoting the total magnitude of jumps in  $\Sigma_i^{(j,l)}(z)$  by  $R_i^{(j,l)}$ , the variability of the functions  $\Sigma_i^{(j,l)}(z)$ ,  $i = -1, -2, \dots$  is controlled such that  $\sum_{i=-I_T}^{-1} 2^{-i} R_i^{(j,l)} = O(\log T)$  uniformly in  $j \neq l$ .

(B2) Recall  $\mathbb{B}$ , the set of all change-points in the second-order structure of  $\mathbf{X}_{t,T}$  defined in (9). Then  $\nu_r \in \mathbb{B}$ ,  $r = 1, \dots, N$  satisfy the conditions in (A1) in place of  $\eta_q$ ,  $q = 1, \dots, N$ .

The quantity of interest in modelling a multivariate LSW time series is the Evolutionary Wavelet Spectrum (EWS) and the Evolutionary Wavelet Cross-spectrum (EWCS), which are defined as

$$\begin{aligned} S_i^{(j)}(z) &= S_i^{(j,j)}(z) = (W_i^{(j)}(z))^2 \quad \text{for } j = 1, \dots, p, \\ S_i^{(j,l)}(z) &= W_i^{(j)}(z)W_i^{(l)}(z)\Sigma_i^{(j,l)}(z) \quad \text{for } j \neq l; j, l = 1, \dots, p. \end{aligned}$$

To study the connection between EWS and the second-order structure of  $\mathbf{X}_{t,T}$ , we adopt the following quantities from Nason et al. (2000): with the same wavelet system as that used in the definition of  $\mathbf{X}_{t,T}$ , we define the autocorrelation wavelets as  $\Psi_i(\tau) = \sum_k \psi_{i,k} \psi_{i,k+\tau}$ , the cross-scale autocorrelation wavelets as  $\Psi_{i,i'}(\tau) = \sum_k \psi_{i,k} \psi_{i',k+\tau}$ , and the autocorrelation wavelet inner product matrix as  $\mathbf{A} = (A_{i,i'})_{i,i' < 0}$  with  $A_{i,i'} = \sum_{\tau} \Psi_i(\tau) \Psi_{i'}(\tau) = \sum_{\tau} \Psi_{i,i'}^2(\tau) > 0$ . Then, the *local* autocovariance and cross-covariance functions of  $\mathbf{X}_{t,T}$  are defined as

$$\begin{aligned} c^{(j)}(z, \tau) = c^{(j,j)}(z, \tau) &= \sum_{i=-\infty}^{-1} S_i^{(j)}(z) \Psi_i(\tau) \quad (\text{from Nason et al. (2000)}), \\ c^{(j,l)}(z, \tau) &= \sum_{i=-\infty}^{-1} S_i^{(j,l)}(z) \Psi_i(\tau) \quad (\text{from Sanderson et al. (2010)}). \end{aligned}$$

Recalling the definition of time-varying autocovariance and cross-covariance functions, the functions  $c^{(j,l)}(z, \tau)$  and  $c_T^{(j,l)}(z, \tau)$  are close to each other in the following sense.

**Proposition 1.** Under (B1)–(B2),  $c_T^{(j,l)}(z, \tau)$  converges to  $c^{(j,l)}(z, \tau)$  as

$$\frac{1}{T} \sum_{t=0}^{T-1} \left| c_T^{(j,l)}(t/T, \tau) - c^{(j,l)}(t/T, \tau) \right| = o(1) \quad (27)$$

for all  $j, l = 1, \dots, p$ .

The proof is provided in Appendix B.2. From (27), we can see that there exists an asymptotic one-to-one relationship between the EWS (EWCS)  $S_i^{(j,l)}(z)$  and the autocovariance (cross-covariance)



functions  $c_T^{(j,l)}(z, \tau)$ ,  $\tau \in \mathbb{Z}$  for all  $j, l = 1, \dots, p$  such that, if there is a change-point in  $c_T^{(j,l)}(z, \tau)$  at some lag  $\tau$ , at least one of the corresponding  $S_i^{(j,l)}(z)$ ,  $i = -1, -2, \dots$  has a change-point at the same location  $z$ , and vice versa.

Furthermore, we can also show an one-to-one correspondence between the EWS (EWCS) and the wavelet periodograms (cross-periodograms). Let  $\beta_i^{(j,l)}(z)$  be a linear transformation of the EWS (EWCS) defined as  $\beta_i^{(j,l)}(z) = \sum_{i'=-\infty}^{-1} S_{i'}^{(j,l)}(z) A_{i,i'}$ . Then, the function  $\beta_i^{(j,l)}(z)$  is piecewise constant with its change-points corresponding to those of  $\{S_{i'}^{(j,l)}(z)\}_{i'}$  due to the invertibility of  $\mathbf{A}$ .

**Proposition 2.** Under (B1)–(B2),  $\mathbb{E}I_{i,t,T}^{(j,l)}$  satisfies

$$\frac{1}{T} \sum_{t=0}^{T-1} \left| \mathbb{E}I_{i,t,T}^{(j,l)} - \beta_i^{(j,l)} \left( \frac{t}{T} \right) \right|^2 = 2^{-i} O(T^{-1}) + b_{i,T}^{(j,l)}, \quad (28)$$

where  $b_{i,T}^{(j,l)}$  depends on the corresponding sequence  $\{L_i^{(j)}\}_i$  or  $\{R_i^{(j,l)}\}_i$ .

The proof of (28) is a direct modification of that of Proposition 2.1 of Fryzlewicz and Nason (2006) and thus is omitted. In summary, from Propositions 1–2 and the invertibility of  $\mathbf{A}$ , there exists an asymptotic one-to-one correspondence between the autocovariance (cross-covariance) functions and the expectations of wavelet periodograms (cross-periodograms) as noted in Section 3. Therefore, any change-points in the autocovariance (cross-covariance) functions are detectable by examining the corresponding wavelet periodogram (cross-periodogram) sequences.

## B.1 Proof of Theorem 2

From its construction,  $\mathbb{E}I_{i,t,T}^{(j,l)}$  is piecewise constant and “almost” satisfies (A1) and (A3) in the sense that, for any change-point  $\nu$  in  $\beta_i^{(j,l)}(t/T)$ ,

- (a)  $\mathbb{E}I_{i,t,T}^{(j,l)}$  is piecewise constant apart from the intervals  $[\nu - K2^{-i}, \nu + K2^{-i}]$  for some  $K > 0$ , where it shows smoother transitions, and
- (b)  $\mathbb{E}I_{i,t,T}^{(j,l)}$  has at least one change-point within the intervals  $[\nu - K2^{-i}, \nu + K2^{-i}]$ , such that  $|\mathbb{E}I_{i,t_1,T}^{(j,l)} - \mathbb{E}I_{i,t_2,T}^{(j,l)}|$  is bounded away from zero for  $t_1 = \nu - K2^{-i} - 1$  and  $t_2 = \nu + K2^{-i} + 1$ .

Note that (a) and (b) also hold for  $\mathbb{E}\tilde{I}_{i,t,T}^{(j,l)}$  for  $j \neq l$  defined as in (13). To accommodate these features of  $I_{i,t,T}^{(j)}$  and  $\tilde{I}_{i,t,T}^{(j,l)}$ , we propose a modification of the multiplicative model (1),

$$\tilde{Y}_{t,T}^{(k)} = \sigma_{t,T}^{(k)} \cdot \tilde{Z}_{t,T}^{(k)2}, \quad t = 0, \dots, T-1; \quad k = 1, \dots, d. \quad (29)$$

The difference between the two models (1) and (29) comes from the function  $\mathbb{E}\tilde{Y}_{t,T}^{(k)} = \sigma_{t,T}^{(k)}$  which is close to a piecewise constant function  $\sigma^{(k)}(t/T)$  as  $\mathbb{E}I_{i,t,T}^{(j,l)}$  is close to  $\beta_i^{(j,l)}(z)$  (see (28)).

We also adapt the assumptions (A2)–(A4) to the multivariate time series set-up, and denote their analogues in this setting by (B3)–(B5). The latter assumptions are imposed on  $I_{i,t,T}^{(j)}$ ,  $j = 1, \dots, p$

and  $\tilde{I}_{i,t,T}^{(j,l)}$ ,  $j \neq l$ ;  $j, l = 1, \dots, p$  at scales  $i = -1, \dots, I_T^*$ , using the representation of these quantities as in (29) (the notation below refers to that representation).

(B3)  $\{\tilde{Z}_{t,T}^{(k)}\}_{t=0}^{T-1}$  is a sequence of standard normal variables and  $\max_k \phi_\infty^{(k)1} < \infty$ , where  $\phi^{(k)}(\tau) = \sup_{t,T} |\text{cor}(\tilde{Z}_{t,T}^{(k)}, \tilde{Z}_{t+\tau,T}^{(k)})|$  and  $\phi_\infty^{(k)r} = \sum_\tau |\phi^{(k)}(\tau)|^r$ .

(B4) There exist positive constants  $\sigma^*, \sigma_* > 0$  such that  $\{\max_{k,t,T} \sigma^{(k)}(t/T) \vee \max_{k,t,T} \sigma_{t,T}^{(k)}\} \leq \sigma^*$ , and given any change-point  $\eta_q$  in  $\sigma^{(k)}(t/T)$ , we have  $|\sigma^{(k)}((\eta_q + 1)/T) - \sigma^{(k)}(\eta_q/T)| > \sigma_*$  uniformly for all  $k$ .

(B5)  $p$  and  $T$  satisfy  $p^2 \cdot T^{-\log T} \rightarrow 0$ .

The following proposition shows that applying the SBS algorithm to  $\tilde{Y}_{t,T}^{(k)}$  instead of  $Y_{t,T}^{(k)}$  also leads to consistent change-point estimates  $\tilde{\eta}_q$ ,  $q = 1, \dots, \tilde{N}$ .

**Proposition 3.** Under (A1), (A4) and (B3)–(B4), letting  $\Delta_T \asymp \epsilon_T$ , we have that  $\tilde{\eta}_q$ ,  $q = 1, \dots, \tilde{N}$  satisfy

$$\mathbb{P} \left\{ \tilde{N} = N; |\tilde{\eta}_q - \eta_q| < C_3 \epsilon_T \text{ for } q = 1, \dots, N \right\} \rightarrow 1$$

as  $T \rightarrow \infty$  for some  $C_3 > 0$ , where  $\epsilon_T$  and  $\pi_T$  are identical to those in Theorem 1.

For proof, see Appendix B.3.

We are now ready to prove Theorem 2. Proposition 3 implies that the SBS algorithm is consistent in detecting change-points from wavelet periodograms and cross-periodograms at a single scale  $i$ , i.e. all the change-points that are detectable from scale  $i$  are identified by applying the SBS algorithm to the wavelet periodograms and cross-periodograms at the same scale. Besides, coupled with (B4), the condition on the magnitude of  $|W_i^{(j)}(z)|$  in (B1) implies that for each change-point, the finest scale  $i$  at which it is detected satisfies  $i \geq I_T^* = -\lceil \alpha \log \log T \rceil$ . Suppose  $t = \nu$  is a change-point in  $S_i^{(j)}(t/T)$  which can be detected only at the scales coarser than  $I_T^*$ . Then, the corresponding jump in  $\beta_i^{(j)}(t/T)$  is of the magnitude bounded from above by

$$\left| \sum_{i'=-\infty}^{I_T^*-1} \left\{ S_i^{(j)} \left( \frac{\nu+1}{T} \right) - S_i^{(j)} \left( \frac{\nu}{T} \right) \right\} A_{i,i'} \right| \leq C \sum_{i'=-\infty}^{I_T^*-1} 2^{i'} A_{i,i'} \rightarrow 0,$$

since  $A_{i,i'} > 0$  and  $\sum_{i'=-\infty}^{-1} 2^{i'} A_{i,i'} = 1$  from Fryzlewicz et al. (2003), and thus (B4) is violated. We conclude that there exists  $I_T^*$  such that all the change-points  $\nu_r$ ,  $r = 1, \dots, N$  are detectable from examining the scales  $i = -1, \dots, I_T^*$ . Since the SBS-MVTS algorithm repeatedly applies the SBS algorithm to the finest  $|I_T^*|$  scales, its consistency with the required rates is a simple consequence of the argument about across-scales post-processing from Cho and Fryzlewicz (2012).

## B.2 Proof of Proposition 1

Let  $t = \lfloor zT \rfloor$ . Then we have

$$\begin{aligned} c_T^{(j)}(z, \tau) &= \mathbb{E} \left\{ \sum_{i=-\infty}^{-1} \sum_{k=-\infty}^{\infty} W_i^{(j)} \left( \frac{k}{T} \right) \psi_{i,t-k} \xi_{i,k}^{(j)} \sum_{i'=-\infty}^{-1} \sum_{k'=-\infty}^{\infty} W_{i'}^{(j)} \left( \frac{k'}{T} \right) \psi_{i',t+\tau-k'} \xi_{i',k'}^{(j)} \right\} \\ &= \sum_{i=-\infty}^{-1} \sum_{k=-\infty}^{\infty} S_i^{(j)} \left( \frac{k}{T} \right) \psi_{i,t-k} \psi_{i,t+\tau-k}. \end{aligned}$$

Therefore

$$\begin{aligned} & \frac{1}{T} \sum_{t=0}^{T-1} \left| c_T^{(j)}(z, \tau) - c^{(j)}(z, \tau) \right| \leq \frac{1}{T} \sum_{t=0}^{T-1} \left| \sum_{i=-\infty}^{-1} \sum_{k=-\infty}^{\infty} \left\{ S_i^{(j)} \left( \frac{k}{T} \right) - S_i^{(j)} \left( \frac{t}{T} \right) \right\} \psi_{i,t-k} \psi_{i,t+\tau-k} \right| \\ &= \frac{1}{T} \sum_{t=0}^{T-1} \left| \sum_{i=-J_T}^{-1} + \sum_{i=-\infty}^{-J_T-1} \left[ \sum_{k=-\infty}^{\infty} \left\{ S_i^{(j)} \left( \frac{k}{T} \right) - S_i^{(j)} \left( \frac{t}{T} \right) \right\} \psi_{i,t-k} \psi_{i,t+\tau-k} \right] \right| \equiv I + II, \end{aligned}$$

where the cut-off index is set as  $J_T = \varrho \log_2 T$  for  $\varrho \in (0, 1)$ . For all  $i = -1, \dots, -J_T$ , the length of support of  $\psi_{i,t-k} \psi_{i,t+\tau-k}$  is bounded from above by  $K2^{J_T}$  uniformly for some  $K > 0$ . Therefore, the summands of  $I$  are equal to 0 except for those  $t$  which are within the distance of  $K2^{J_T}$  from any change-point of  $S_i^{(j)}(z)$ ,  $i = -1, \dots, -J_T$ . Then from (B1)–(B2), term  $I$  is bounded by

$$\begin{aligned} & \frac{NK2^{J_T}}{T} \left| \sum_{i=-J_T}^{-1} L_i^{(j)} \sum_{k=-\infty}^{\infty} \psi_{i,t-k} \psi_{i,t+\tau-k} \right| = \frac{NK2^{J_T}}{T} \left| \sum_{i=-J_T}^{-1} L_i^{(j)} \Psi_i(\tau) \right| \\ & \leq \frac{NK2^{J_T}}{T} \left| \sum_{i=-J_T}^{-1} L_i^{(j)} \right| = O \left( \frac{N2^{J_T} \log T}{T} \right), \end{aligned} \quad (30)$$

where the first inequality comes from the fact that  $\Psi_i(\tau) = O(1)$  uniformly in  $\tau$ . The term  $II$  is bounded by  $T^{-1} \sum_{t=0}^{T-1} \left| \sum_{i=-\infty}^{-J_T-1} L_i^{(j)} \Psi_i(\tau) \right| \leq \left| \sum_{i=-\infty}^{-J_T-1} L_i^{(j)} \right|$ . Due to the bound imposed on  $W_i^{(j)}(z)$ , (B1) implies that  $|L_i^{(j)}| \leq C2^i$  and therefore  $\sum_{i=-\infty}^{-J_T} L_i^{(j)} \leq C2^{-J_T} \rightarrow 0$ , and combined with (30) we have  $I + II = o(1)$ .

As for the relationship between  $c_T^{(j,l)}(z, \tau)$  and  $c^{(j,l)}(z, \tau)$ , we note (B1)–(B2) implies that the total magnitude of jumps in  $S_i^{(j,l)}(z, \tau) = W_i^{(j)}(z, \tau) W_i^{(l)}(z, \tau) \Sigma_i^{(j,l)}(z, \tau)$  is bounded from above by  $K' \max(L_i^{(j)}, L_i^{(l)}, R_i^{(j,l)})$  for some positive constant  $K'$ . Then the proof follows exactly the same arguments as above and thus is omitted.

## B.3 Proof of Proposition 3

Proposition 3 can be proved by showing that any change-point in  $\sigma^{(k)}(t/T)$  is detectable from  $\tilde{Y}_{t,T}^{(k)}$  within the distance of  $O(\epsilon_T)$ . Let  $\sigma^{(k)}(t/T)$  have a change-point at  $t = \eta_{q_1+q} \equiv \eta$  within a segment  $(s, e)$ , where  $s, \eta_{q_1+q}$  and  $e$  satisfy (15) and (16). From the compactness of wavelet vector  $\psi_i$ ,

the sequence  $\sigma_{t,T}^{(k)}$  also has a change-point within the interval containing  $\eta$ , such that there exists  $\bar{\eta} \in [\eta - K2^{-I_T^*}, \eta + K2^{-I_T^*}]$  where  $|\sigma_{\bar{\eta},T}^{(k)} - \sigma_{\bar{\eta}+1,T}^{(k)}| > 0$  although it may not be unique. Let  $\bar{\eta} < \eta$ . Since such  $\bar{\eta}$  still satisfies (15) in place of  $\eta$ , Proposition 2 implies that

$$\begin{aligned} & \left\{ \left| \frac{1}{\bar{\eta} - s + 1} \sum_{t=s}^{\bar{\eta}} \sigma_{t,T}^{(k)} - \frac{1}{e - \bar{\eta}} \sum_{t=\bar{\eta}+1}^e \sigma_{t,T}^{(k)} \right| - \left| \frac{1}{\eta - s + 1} \sum_{t=s}^{\eta} \sigma^{(k)} \left( \frac{t}{T} \right) - \frac{1}{e - \eta} \sum_{t=\eta+1}^e \sigma^{(k)} \left( \frac{t}{T} \right) \right| \right\}^2 \\ & \leq C\delta_T^{-2} \left| \sum_{t=s}^{\bar{\eta}} \left\{ \sigma_{t,T}^{(k)} - \sigma^{(k)} \left( \frac{t}{T} \right) \right\} - \sum_{t=\eta+1}^e \left\{ \sigma_{t,T}^{(k)} - \sigma^{(k)} \left( \frac{t}{T} \right) \right\} - \sum_{t=\bar{\eta}+1}^{\eta} \left\{ \sigma_{t,T}^{(k)} + \sigma^{(k)} \left( \frac{t}{T} \right) \right\} \right|^2 \\ & \leq C\delta_T^{-1} \sum_{t=s}^e |\sigma_{t,T}^{(k)} - \sigma^{(k)}(t/T)|^2 + C'\delta_T^{-2} \sigma^{*2} 2^{-2I_T^*} \rightarrow 0. \end{aligned}$$

That is, the CUSUM statistics computed from  $\tilde{Y}_{t,T}^{(k)}$  are of the same order as those from  $Y_{t,T}^{(k)}$  around  $t = \eta$ . Therefore, the arguments used in Lemmas 1–5 also apply to  $\tilde{Y}_{t,T}^{(k)}$ , and  $\hat{\eta} = \arg \max_{t \in (s,e)} \tilde{Y}_{s,t,e}^{(k)}$  satisfies  $|\hat{\eta} - \bar{\eta}| \leq c_0 \epsilon_T$ . Then with  $I_T^* = -\lfloor \alpha \log \log T \rfloor$ , we have  $|\hat{\eta} - \eta| \leq |\hat{\eta} - \bar{\eta}| + |\bar{\eta} - \eta| \leq c_0 \epsilon_T + C \log^{2+\vartheta} T$ . Besides, once a change-point is detected within such an interval, the condition (6) in Step 2.2 does not allow any more change-points to be detected too close to previously detected change-points, and therefore any  $t \in [\eta - K2^{-I_T^*}, \eta + K2^{-I_T^*}]$  is disregarded from future change-point detection. Hence despite the bias between  $\sigma_{t,T}^{(k)}$  and  $\sigma^{(k)}(t/T)$ , the consistency of the SBS algorithm still holds for  $\tilde{Y}_{t,T}^{(k)}$  in place of  $Y_{t,T}^{(k)}$ .

## References

- Aue, A., Hörmann, S., Horváth, L., and Reimherr, M. (2009), “Break detection in the covariance structure of multivariate time series models,” *Annals of Statistics*, 37, 4046–4087.
- Bosq, D. (1998), *Nonparametric Statistics for Stochastic Processes: Estimation and Prediction*, Springer.
- Chen, J. and Gupta, A. K. (1997), “Testing and locating variance change-points with application to stock prices,” *Journal of the American Statistical Association*, 92, 739–747.
- Cho, H. and Fryzlewicz, P. (2011), “Multiscale interpretation of taut string estimation and its connection to Unbalanced Haar wavelets,” *Statistics and Computing*, 21, 671–681.
- (2012), “Multiscale and multilevel technique for consistent segmentation of nonstationary time series,” *Statistica Sinica*, 22, 207–229.
- Davis, R. A., Lee, T. C. M., and Rodriguez-Yam, G. A. (2006), “Structural break estimation for non-stationary time series,” *Journal of the American Statistical Association*, 101, 223–239.

- (2008), “Break detection for a class of nonlinear time series models,” *Journal of Time Series Analysis*, 29, 834–867.
- Dwivedi, Y. and Subba Rao, S. (2011), “A test for second-order stationarity of a time series based on the discrete Fourier transform,” *Journal of Time Series Analysis*, 32, 68–91.
- Fan, J., Lv, J., and Qi, L. (2011), “Sparse high-dimensional models in economics,” *Annual Review of Economics*, 3, 291–317.
- Fryzlewicz, P. (2005), “Modelling and forecasting financial log-returns as locally stationary wavelet processes,” *Journal of Applied Statistics*, 32, 503–528.
- (2013), “Wild Binary Segmentation for multiple change-point detection,” *Preprint, available from <http://stats.lse.ac.uk/fryzlewicz/wbs/wbs.pdf>*.
- Fryzlewicz, P. and Nason, G. (2006), “Haar-Fisz estimation of evolutionary wavelet spectra,” *Journal of the Royal Statistical Society, Series B*, 68, 611–634.
- Fryzlewicz, P., Van Bellegem, S., and von Sachs, R. (2003), “Forecasting non-stationary time series by wavelet process modelling,” *Annals of the Institute of Statistical Mathematics*, 55, 737–764.
- Groen, J., Kapetanios, G., and Price, S. (2011), “Multivariate methods for monitoring structural change,” *Journal of Applied Econometrics* (To appear).
- Horváth, L. and Hušková, M. (2012), “Change-point detection in panel data,” *Journal of Time Series Analysis*, 33, 631–648.
- Inclán, C. and Tiao, G. C. (1994), “Use of cumulative sums of squares for retrospective detection of changes of variance,” *Journal of the American Statistical Association*, 89, 913–923.
- Jentsch, C. and Subba Rao, S. (2013), “A test for second order stationarity of a multivariate time series,” *Preprint, available from [http://www.stat.tamu.edu/~suhasini/papers/multivariate\\_test\\_stationarity\\_revisionR1.pdf](http://www.stat.tamu.edu/~suhasini/papers/multivariate_test_stationarity_revisionR1.pdf)*.
- Johnson, N. and Kotz, S. (1970), *Distributions in Statistics: Continuous Univariate Distributions, Vol. 1*, Houghton Mifflin Company.
- Korostelev, A. (1987), “On minimax estimation of a discontinuous signal,” *Theory of Probability and its Applications*, 32, 727–730.
- Lavielle, M. and Moulines, E. (2000), “Least-squares estimation of an unknown number of shifts in a time series,” *Journal of Time Series Analysis*, 21, 33–59.
- Lavielle, M. and Teyssière, G. (2006), “Detection of multiple change-points in multivariate time series,” *Lithuanian Mathematical Journal*, 46, 287–306.

- Mikosch, T. and Stărică, C. (2004), “Nonstationarities in financial time series, the long-range dependence, and the IGARCH effects,” *Review of Economics and Statistics*, 86, 378–390.
- Nason, G. P. (2013), “A test for second-order stationarity and approximate confidence intervals for localized autocovariances for locally stationary time series,” *Journal of the Royal Statistical Society, Series B*, 75, 879–904.
- Nason, G. P. and Silverman, B. W. (1995), “The stationary wavelet transform and some statistical applications,” *Lecture Notes in Statistics* (eds. A. Antoniadis and G. Oppenheim), 103, 281–300.
- Nason, G. P., von Sachs, R., and Kroisandt, G. (2000), “Wavelet processes and adaptive estimation of the evolutionary wavelet spectrum,” *Journal of the Royal Statistical Society, Series B*, 62, 271–292.
- Ombao, H., von Sachs, R., and Guo, W. (2005), “SLEX analysis of multivariate nonstationary time series,” *Journal of the American Statistical Association*, 100, 519–531.
- Ombao, H. C., Raz, J. A., von Sachs, R., and Guo, W. (2002), “The SLEX model of a non-stationary random process,” *Annals of the Institute of Statistical Mathematics*, 54, 171–200.
- Ombao, H. C., Raz, J. A., von Sachs, R., and Malow, B. A. (2001), “Automatic statistical analysis of bivariate nonstationary time series,” *Journal of the American Statistical Association*, 96, 543–560.
- Sanderson, J., Fryzlewicz, P., and Jones, M. (2010), “Estimating linear dependence between non-stationary time series using the locally stationary wavelet model,” *Biometrika*, 97, 435–446.
- Venkatraman, E. S. (1992), “Consistency results in multiple change-point problems,” *Technical Report No. 24, Department of Statistics, Stanford University*.
- Vert, J. and Bleakley, K. (2010), “Fast detection of multiple change-points shared by many signals using group LARS,” *Advances in Neural Information Processing Systems*, 23, 2343–2351.
- Vidakovic, B. (1999), *Statistical Modeling by Wavelets*, Wiley.
- Yuan, M. and Lin, Y. (2006), “Model selection and estimation in regression with grouped variables,” *Journal of the Royal Statistical Society, Series B*, 68, 49–67.